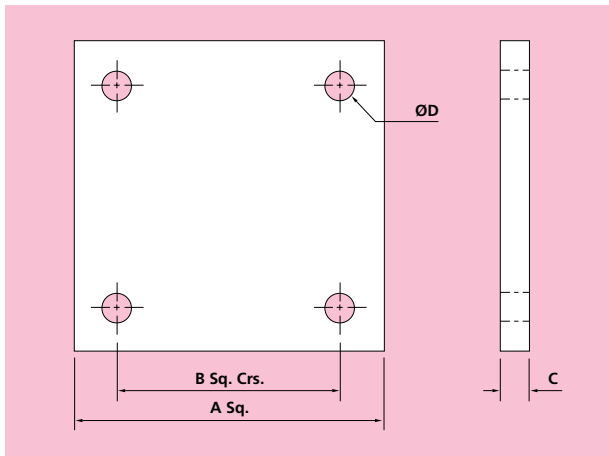


130 CEILING PLATE



Material: Carbon Steel

PART NUMBER	ROD SIZE	A	B	C	DIA. D	RECOMMENDED FIXING BOLT	WEIGHT kgf	LOAD CAPACITY		LOAD GROUP
								kgf	kN	
F130M08	8	130	100	8	9	F287-M8/95	1.1	230	2.3	0
F130M10	10	130	100	8	9	F287-M8/95	1.1	360	3.5	1
F130M12	12	150	120	8	9	F287-M8/95	1.4	530	5.2	2
F130M16	16	170	140	12	9	F287-M8/95	2.7	1010	9.9	3
F130M20	20	190	150	15	12	F287-M10/110	4.3	1580	15.5	4
F130M24	24	220	180	20	14	F287-M12/145	7.6	2280	22.4	5
F130M30	30	270	220	20	18	F287-M16/165	11.5	3650	35.8	6
F130M36	36	320	260	25	22	F287-M20/200	20.1	5340	52.4	7
F130M42	42	370	300	30	26	F288-M16/50	32.3	7400	72.6	8
F130M48	48	450	360	35	31	F288-M20/60	55.7	9650	94.6	9
F130M56	56	580	480	40	35	F288-M24/60	105.7	13350	130.9	10
F130M64	64	580	480	45	35	F289-M20x220/60	118.9	18000	176.5	11

FOR USE IN CONJUNCTION WITH PART NUMBER 114, 122, 122A OR 125

WHEN ORDERED WITH ONE OF THESE PARTS,
THIS IS SUPPLIED AS A WELDED ASSEMBLY