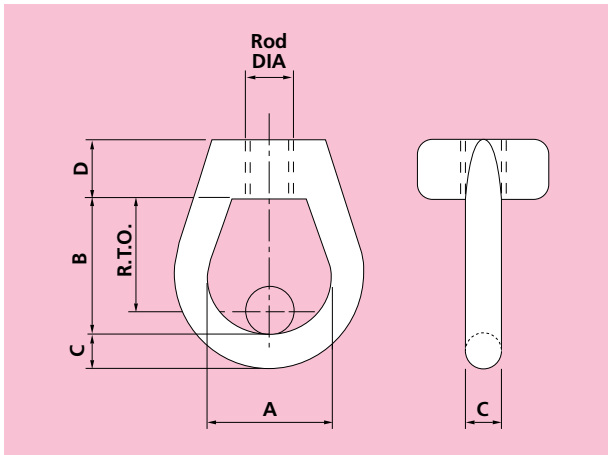


239 WELDLESS EYE NUT



Material: Forged Steel

PART NUMBER	ROD DIA X	A	B	C	D	R.T.O.	WEIGHT kgf	LOAD CAPACITY		LOAD GROUP
								kgf	kN	
F239M08	8	25	38	10	16	34	0.10	230	2.3	0
F239M10	10	25	38	10	16	33	0.10	360	3.5	1
F239M12	12	38	51	13	17	45	0.27	530	5.2	2
F239M16	16	38	51	13	17	43	0.25	1010	9.9	3
F239M20	20	50	79	17	28	69	0.84	1580	15.5	4
F239M24	24	50	79	17	28	67	0.81	2280	22.4	5
F239M30	30	47	95	20	47	80	2.1	3650	35.8	6
F239M36	36	47	95	20	47	77	2.0	5340	52.4	7
F239M42	42	101	159	38	57	138	7.5	7400	72.6	8
F239M48	48	101	159	38	57	135	7.3	9650	94.6	9
F239M56	56	101	159	38	57	131	7.1	13350	130.9	10
F239M64	64	101	159	38	57	127	6.8	18000	176.5	11
F239M72	72	101	222	49	89	186	18.0	23025	225.8	12
F239M80	80	101	222	49	89	182	17.4	28125	275.8	13

R.T.O. ASSUMES USE IN CONJUNCTION WITH A PIN HAVING THE SAME DIAMETER AS THE HANGER ROD