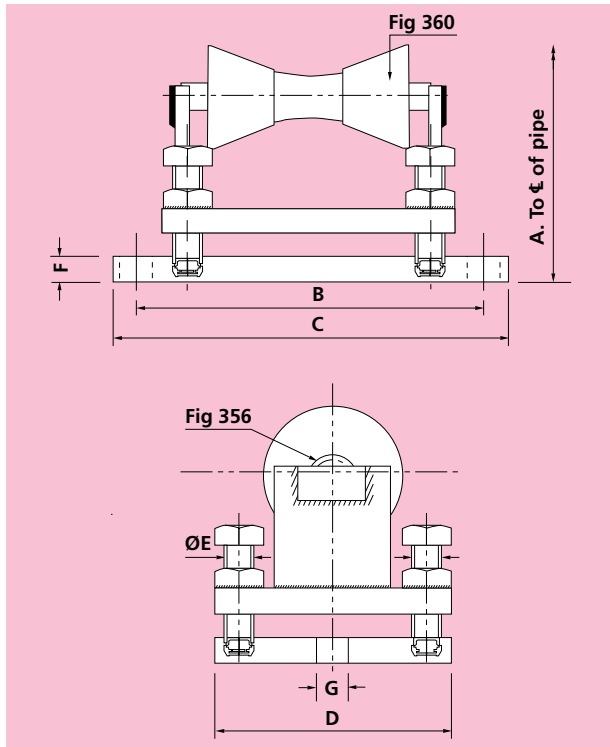


# 357 PIPE ROLLER AND ADJUSTABLE STAND



Material: Cast Iron and Carbon Steel

PART No.	PIPE SIZE	A MIN	A MAX	B	C	D	E	F	G	LOAD CAPACITY	
										kgf	kN
F357-50	50	110	150	150	198	110	16	15	18	175	1.7
F357-65	65	116	156	150	198	110	16	15	18	175	1.7
F357-80	80	126	166	150	198	110	16	15	18	175	1.7
F357-100	100	153	133	190	250	120	16	20	21	425	4.2
F357-125	125	169	209	190	250	120	16	20	21	425	4.2
F357-150	150	184	224	190	250	120	16	20	21	425	4.2
F357-200	200	229	269	250	310	155	20	20	21	950	9.3
F357-250	250	258	298	250	310	155	20	20	21	950	9.3
F357-300	300	301	341	320	392	195	24	25	26	1350	13.2
F357-350	350	317	357	320	392	195	24	25	26	1350	13.2
F357-400	400	353	393	365	437	237	24	25	26	2250	22.1
F357-450	450	381	421	365	437	237	24	25	26	2250	22.1
F357-500	500	410	450	365	437	237	24	25	26	2250	22.1
F357-600	600	473	513	390	462	237	24	25	26	2750	27.0
F357-750	750	585	625	470	542	290	30	30	26	3400	33.3
F357-900	900	686	726	540	612	315	36	40	26	5400	53.0
F357-1050	1050	762	802	540	612	315	36	40	26	5400	53.0
F357-1200	1200	839	879	540	612	315	36	40	26	5400	53.0