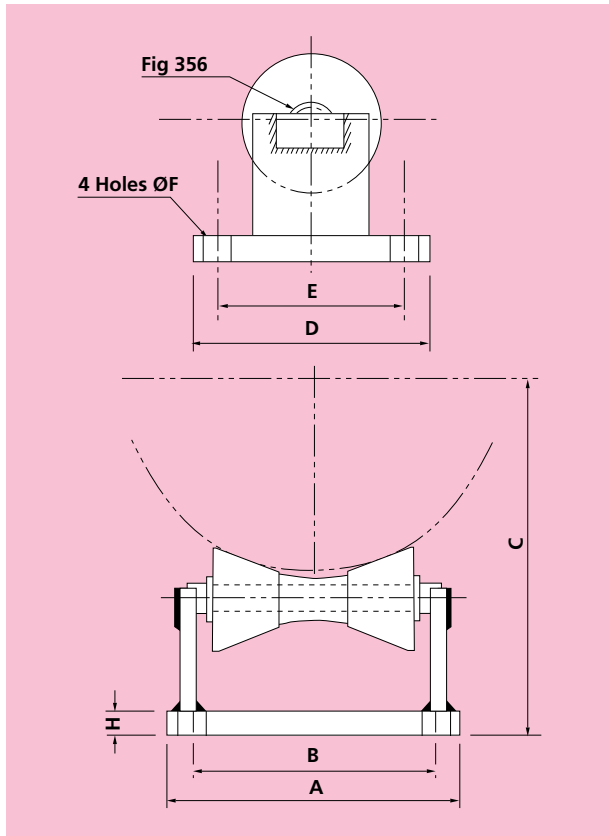


360 PIPE ROLLER AND STAND



Material: Cast Iron and Carbon Steel

PART No.	PIPE SIZE	A	B	C	D	E	F	H	LOAD CAPACITY	
									kgf	kN
F360-50	50	115	85	95	110	80	12	15	175	1.7
F360-65	65	115	85	101	110	80	12	15	175	1.7
F360-80	80	115	85	111	110	80	12	15	175	1.7
F360-100	100	150	120	133	120	90	12	20	425	4.2
F360-125	125	150	120	149	120	90	12	20	425	4.2
F360-150	150	150	120	164	120	90	12	20	425	4.2
F360-200	200	210	174	209	155	115	14	20	950	9.3
F360-250	250	210	174	238	155	115	14	20	950	9.3
F360-300	300	275	215	276	195	135	22	25	1350	13.3
F360-350	350	275	215	292	195	135	22	25	1350	13.3
F360-400	400	320	248	328	237	165	27	25	2250	22.1
F360-450	450	320	248	356	237	165	27	25	2250	22.1
F360-500	500	320	248	385	237	165	27	25	2250	22.1
F360-600	600	345	273	448	237	165	27	25	2750	27.0
F360-750	750	425	335	555	290	200	33	30	3400	33.3
F360-900	900	495	405	646	315	225	33	40	5400	53.0
F360-1050	1050	495	405	722	315	225	33	40	5400	53.0
F360-1200	1200	495	405	799	315	225	33	40	5400	53.0