

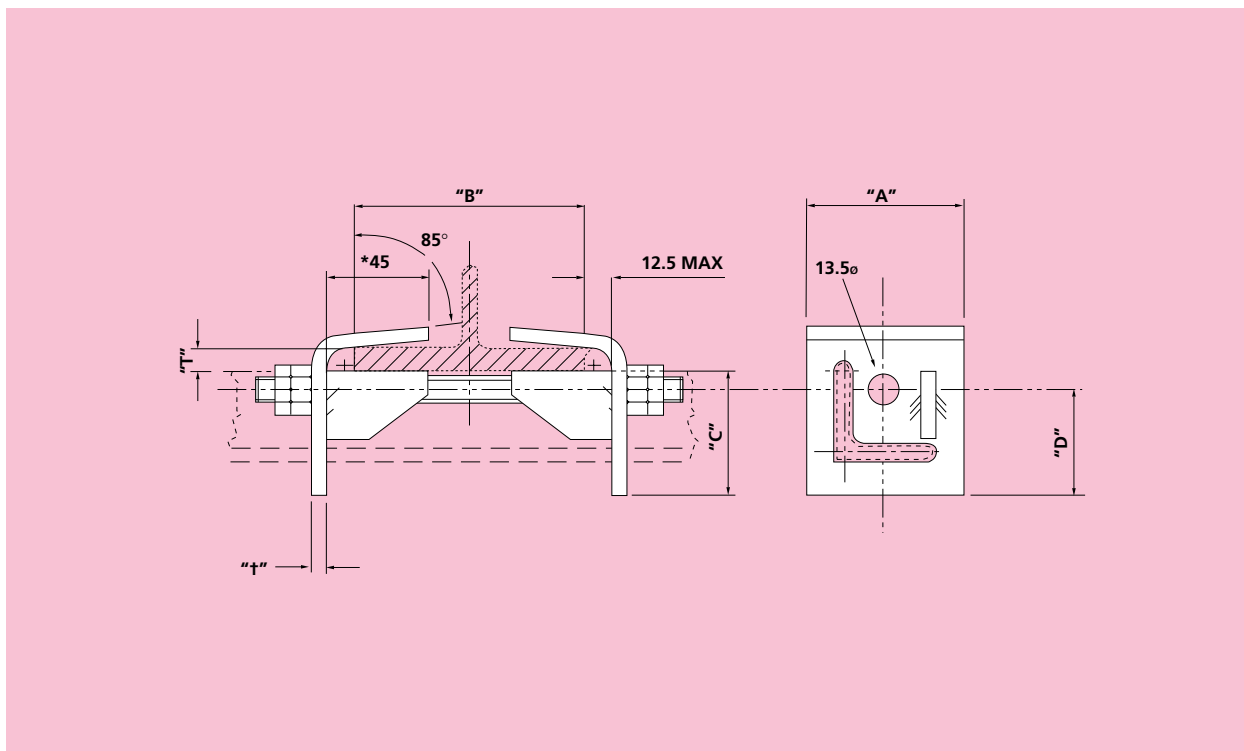


The Spenco® Beam Clamp System has been developed to offer an adaptable, flexible, economical and simple to install range of products, used for the suspension of pipework systems and other plant without the need for welding. This unique system is covered by Patent No. 2057 547.

Features of the Spenco® Beam Clamping System:

- Proven reliability, having been installed in plants since 1984.
- Huge time/cost savings at installation, no site drilling, no site welding, simple assembly of clamping components.
- Versatility: system can cater for a wide range of beam sizes, being fully adjustable to the width and depth of the flange.
- Can safely be installed in hazardous areas where welding would not be allowed.
- Loads can be suspended from either or both sides of the beam or directly underneath.
- Flexibility: some standard arrangements are shown in this catalogue but an infinite number of different supports can be configured.
- Adaptability: the initial purpose of the system was to suspend pipework but a great many installations of other types of equipment have been successfully completed; these include cable tray, ducting, pneumatic and hydraulic systems, lighting, etc.
- Availability: the product is available ex stock from our Droitwich facility and our distributors.
- Hot dip galvanised finish, with threaded items zinc plated. Carbon steel construction. For material specifications, see page 88.
- Technical support: our engineers are available to advise on the use of non-standard configurations of the system. Used in conjunction with other products a wide variety of pipe support assemblies can be configured.

140 SPENCO® BEAM CLAMP



Beam Thickness "T"	Series		Light (SWL)		Heavy (SWL)	
	Light	Heavy	kg	kN	kg	kN
5 to 9.9	L1	H1	1000	9.8	2250	22
10 to 14.9	L2	H2	1000	9.8	2250	22
15 to 19.9	L3	H3	1000	9.8	2250	22
20 to 24.9	L4	H4	1000	9.8	2250	22
25 to 29.9	L5	H5	1000	9.8	2250	22
30 to 34.9	L6	H6	1000	9.8	2250	22
35 to 39.9	L7	H7	1000	9.8	2250	22
40 to 45	L8	H8	1000	9.8	2250	22

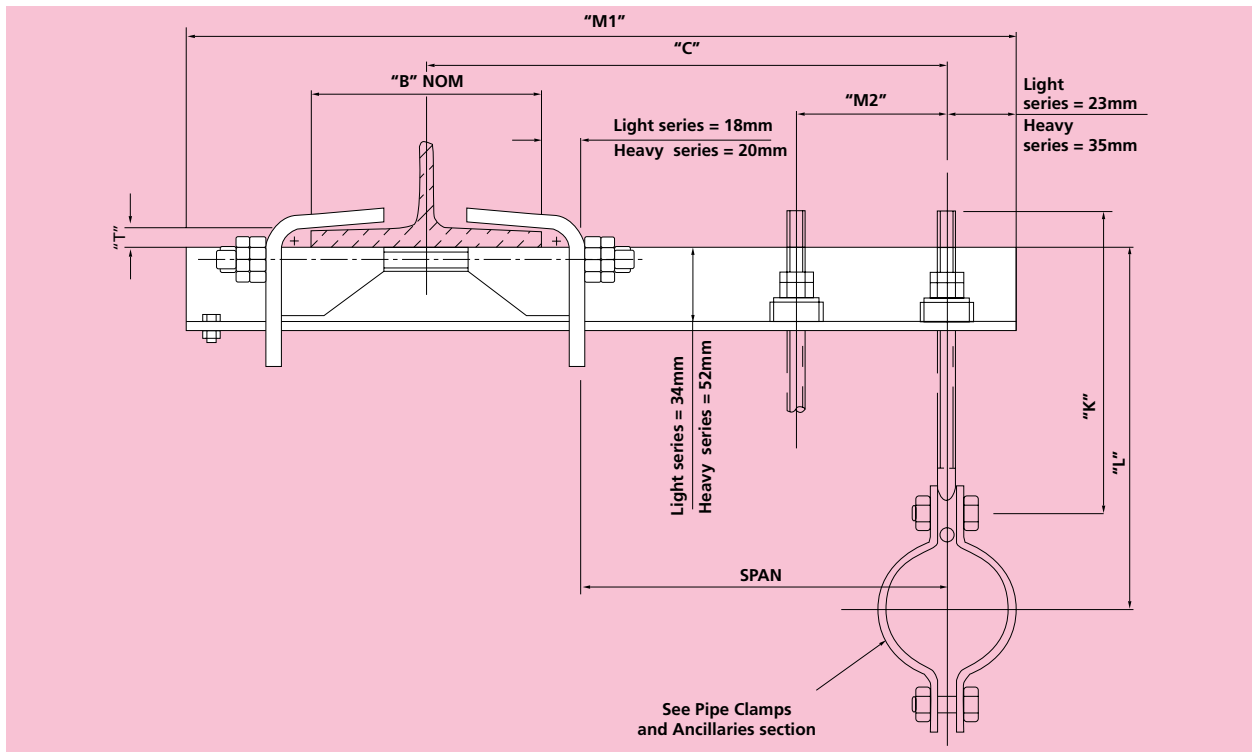
Note: SWL stated are on centre line of beam.

	"T"	Rod ø	"A"	"C"	"D"
Light Series	6	12	70	55	47
Heavy Series	8	12	100	80	70

*Note: For "B" = 76 and 89 reduce this dimension to 35mm.

ORDER BY: FIG. NO., SERIES CODE, AND BEAM FLANGE WIDTH.
ROD LENGTH = "B" + 85mm ROUNDED TO THE NEAREST 50mm.

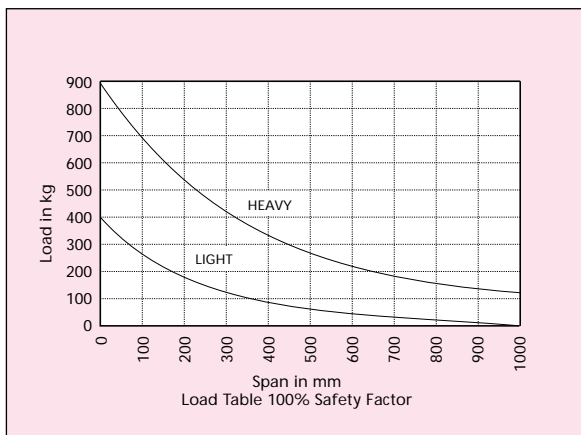
141 SPENCO® BEAM CANTILEVER



Beam Thickness "T"	Series Code	
	Light	Heavy
5 to 9.9	L1	H1
10 to 14.9	L2	H2
15 to 19.9	L3	H3
20 to 24.9	L4	H4
25 to 29.9	L5	H5
30 to 34.9	L6	H6
35 to 39.9	L7	H7
40 to 45	L8	H8

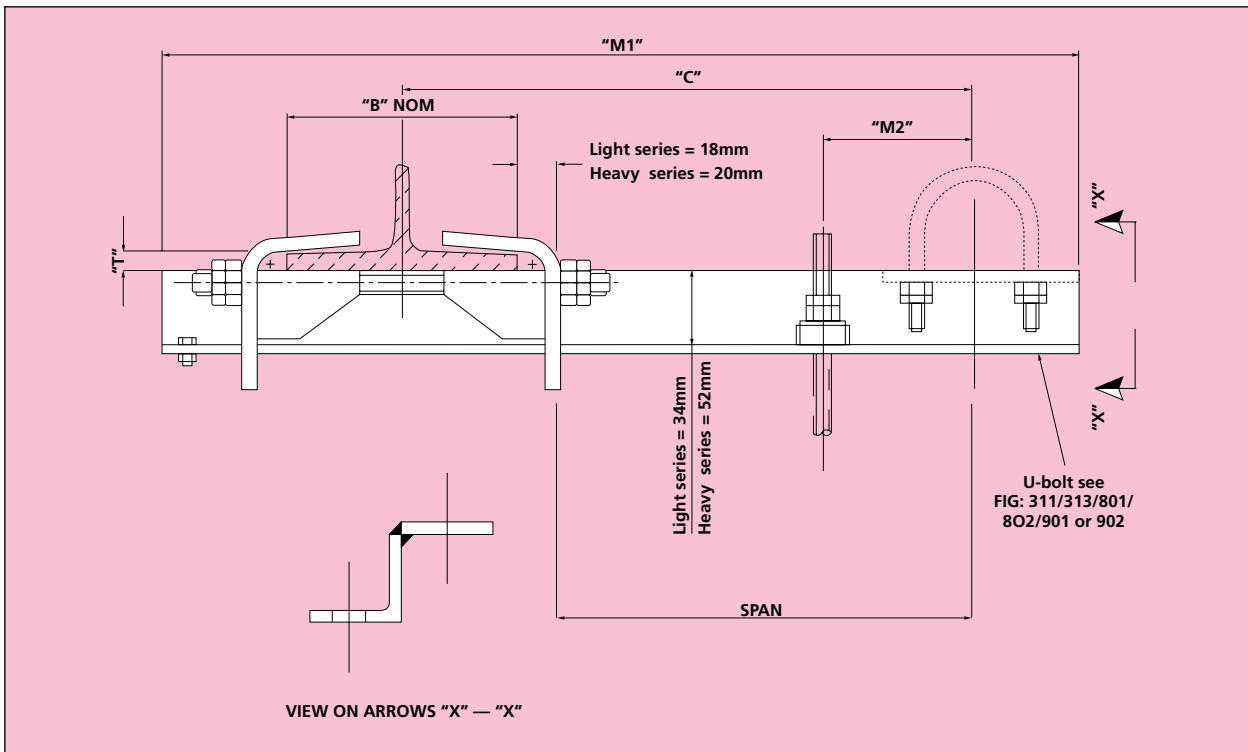
ORDER BY: FIG. NO., SERIES CODE, BEAM FLANGE WIDTH AND DIMENSIONS M1, C, K, L, AND M2 (IF REQUIRED).

PLEASE NOTE: TO CALCULATE LENGTH OF ANGLE MEMBER M1 = "B"/2 + "C" + 90mm FOR LIGHT SERIES AND 110mm FOR HEAVY SERIES ROUNDED UP TO THE NEAREST 100mm. MAXIMUM CANTILEVER ROD DIA IS — LIGHT SERIES = 16mm AND HEAVY SERIES = 20mm. MAXIMUM "C" = 1000mm AND MINIMUM "C" = "B"/2 + 65mm.



- 5
- 6
- 7
- 8
- 9
- 10
- 11

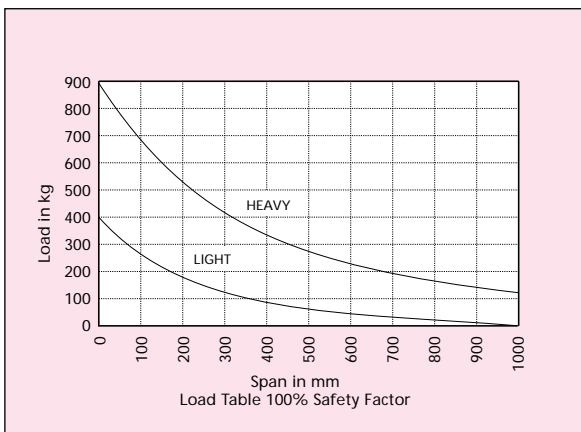
142 SPENCO® CANTILEVER WITH U-BOLT



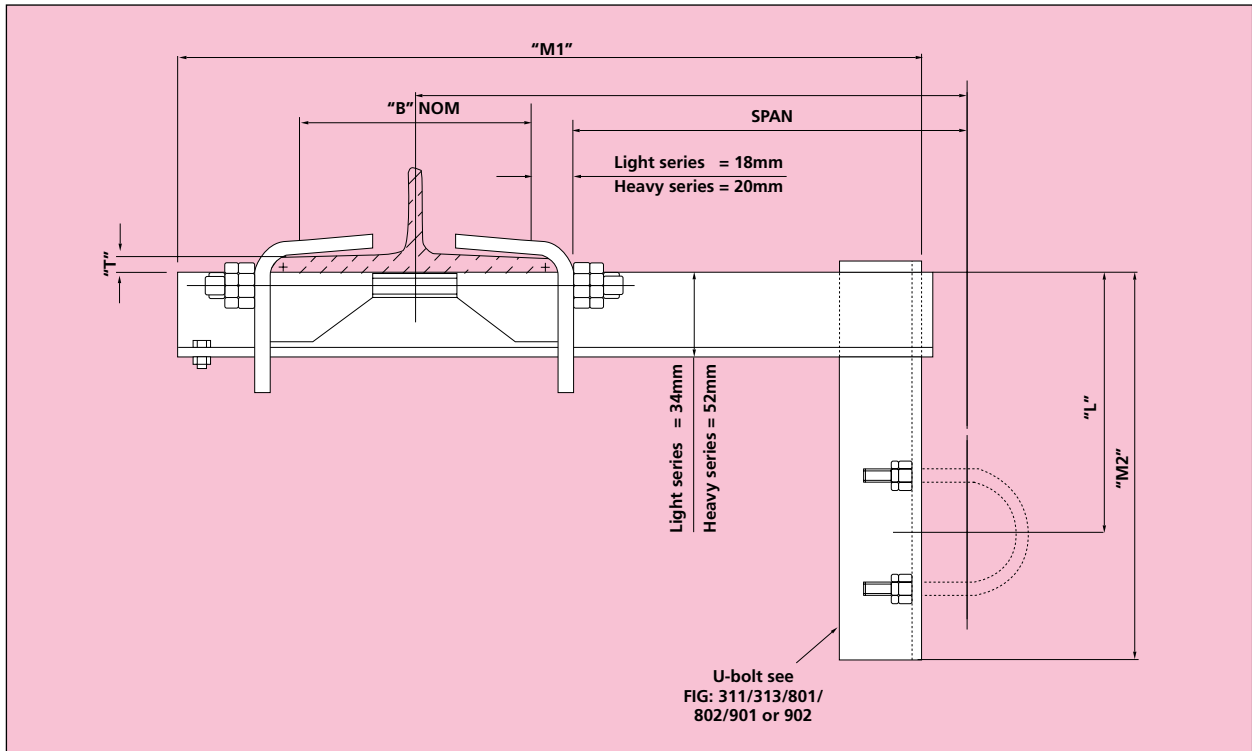
Beam Thickness "T"	Series Code	
	Light	Heavy
5 to 9.9	L1	H1
10 to 14.9	L2	H2
15 to 19.9	L3	H3
20 to 24.9	L4	H4
25 to 29.9	L5	H5
30 to 34.9	L6	H6
35 to 39.9	L7	H7
40 to 45	L8	H8

ORDER BY: FIG. NO., SERIES CODE, BEAM FLANGE WIDTH AND DIMENSIONS M1, C, L, AND M2.

PLEASE NOTE: TO CALCULATE LENGTH OF ANGLE MEMBER M1 = "B"/2 + "C" + 60mm FOR LIGHT SERIES AND 45mm FOR HEAVY SERIES ROUNDED UP TO THE NEAREST 100mm. MAXIMUM U-BOLT BAR DIA IS — 16mm. MAXIMUM "C" = 1000mm AND MINIMUM "C" = "B"/2 + 90mm FOR LIGHT SERIES AND 140mm FOR THE HEAVY SERIES. MAXIMUM "L" = 1000mm.



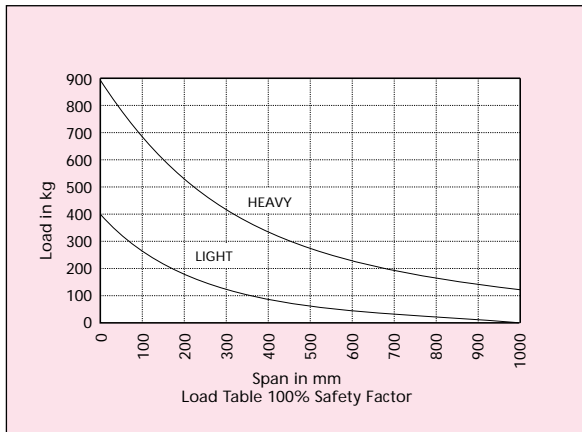
143 SPENCO® ANGLED BEAM CANTILEVER WITH U-BOLT



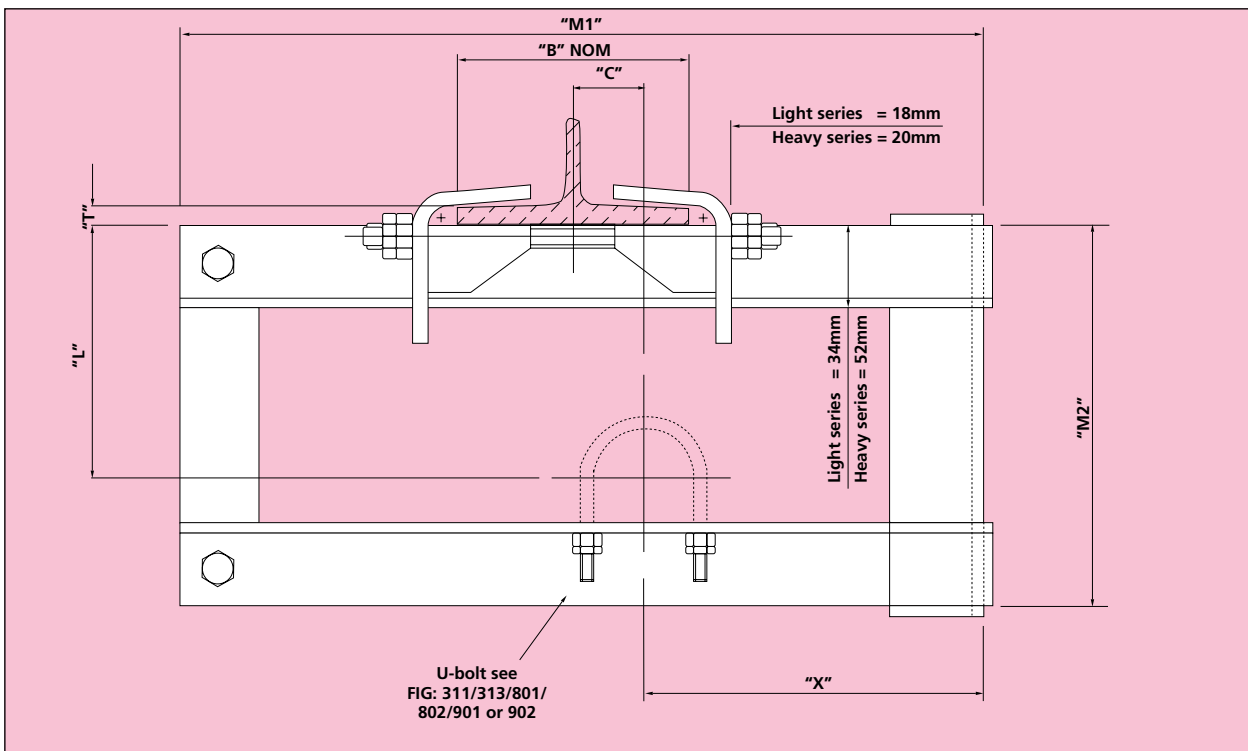
Beam Thickness "T"	Series Code	
	Light	Heavy
5 to 9.9	L1	H1
10 to 14.9	L2	H2
15 to 19.9	L3	H3
20 to 24.9	L4	H4
25 to 29.9	L5	H5
30 to 34.9	L6	H6
35 to 39.9	L7	H7
40 to 45	L8	H8

ORDER BY: FIG. NO., SERIES CODE, BEAM FLANGE WIDTH AND DIMENSIONS M1, C, L, AND M2.

PLEASE NOTE: TO CALCULATE LENGTH OF ANGLE MEMBER M1 = "B"/2 + "C" + 60mm FOR LIGHT SERIES AND 45mm FOR HEAVY SERIES ROUNDED UP TO THE NEAREST 100mm. MAXIMUM U-BOLT BAR DIA IS — 16mm. MAXIMUM "C" = 1000mm AND MINIMUM "C" = "B"/2 + 90mm FOR LIGHT SERIES AND 140mm FOR THE HEAVY SERIES. MAXIMUM "L" = 1000mm.



144 SPENCO® UNDER BEAM CANTILEVER WITH U-BOLT



Beam Thickness "T"	Series		Light (SWL)		Heavy (SWL)	
	Light	Heavy	kg	kN	kg	kN
5 to 9.9	L1	H1	1000	9.8	2250	22
10 to 14.9	L2	H2	1000	9.8	2250	22
15 to 19.9	L3	H3	1000	9.8	2250	22
20 to 24.9	L4	H4	1000	9.8	2250	22
25 to 29.9	L5	H5	1000	9.8	2250	22
30 to 34.9	L6	H6	1000	9.8	2250	22
35 to 39.9	L7	H7	1000	9.8	2250	22
40 to 45	L8	H8	1000	9.8	2250	22

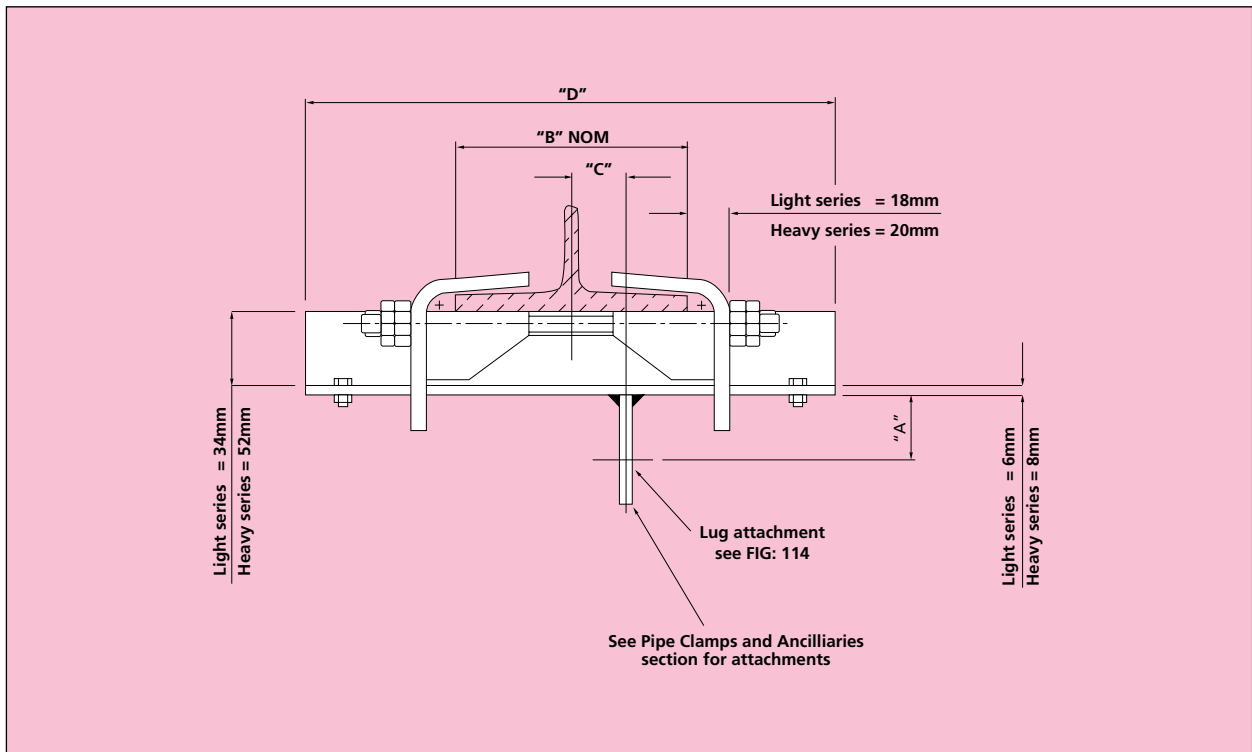
Note: SWL stated are on centre line of beam.

ORDER BY: FIG. NO., SERIES CODE, BEAM FLANGE WIDTH, AND DIMENSIONS M1, C, L, AND M2.

PLEASE NOTE: DIMENSION "M2" = PIPE OD/2 + 40mm FOR LIGHT SERIES AND 60mm FOR HEAVY SERIES. MAXIMUM CANTILEVER U-BOLT BAR DIA IS 16mm. MINIMUM "C" = 0 mm TO MAXIMUM "C" = "B"/2 + 90 FOR LIGHT SERIES AND 140mm FOR THE HEAVY SERIES. MAXIMUM "L" = 1000mm AND MINIMUM "L" = PIPE OD/2 + 70mm FOR LIGHT SERIES. MAXIMUM "L" = PIPE OD/2 + 105mm for HEAVY SERIES.

Beam Flange Width	Light		Heavy	
	M1	X	M1	X
76 to 127	455	135	525	155
133 to 191	555	170	625	190
203 to 254	650	200	720	220
267 to 305	735	230	805	250
419	900	285	970	305

145 SPENCO® BEAM CLAMP WITH 114 ATTACHMENT



Beam Thickness "T"	Series		Light (SWL)		Heavy (SWL)	
	Light	Heavy	kg	kN	kg	kN
5 to 9.9	L1	H1	1000	9.8	2250	22
10 to 14.9	L2	H2	1000	9.8	2250	22
15 to 19.9	L3	H3	1000	9.8	2250	22
20 to 24.9	L4	H4	1000	9.8	2250	22
25 to 29.9	L5	H5	1000	9.8	2250	22
30 to 34.9	L6	H6	1000	9.8	2250	22
35 to 39.9	L7	H7	1000	9.8	2250	22
40 to 45	L8	H8	1000	9.8	2250	22

Note: SWL stated are on centre line of beam.

ORDER BY: FIG. NO., SERIES CODE, BEAM FLANGE WIDTH AND FIG. 114 SIZE.

PLEASE NOTE: TO CALCULATE LENGTH OF ANGLE MEMBER "D" = "B" + 85mm FOR LIGHT/HEAVY ROUNDED UP TO THE NEAREST 100mm. DIMENSION "A" = SEE FIG. NO. 114 — MAXIMUM PIN DIA = 20mm.

5

6

7

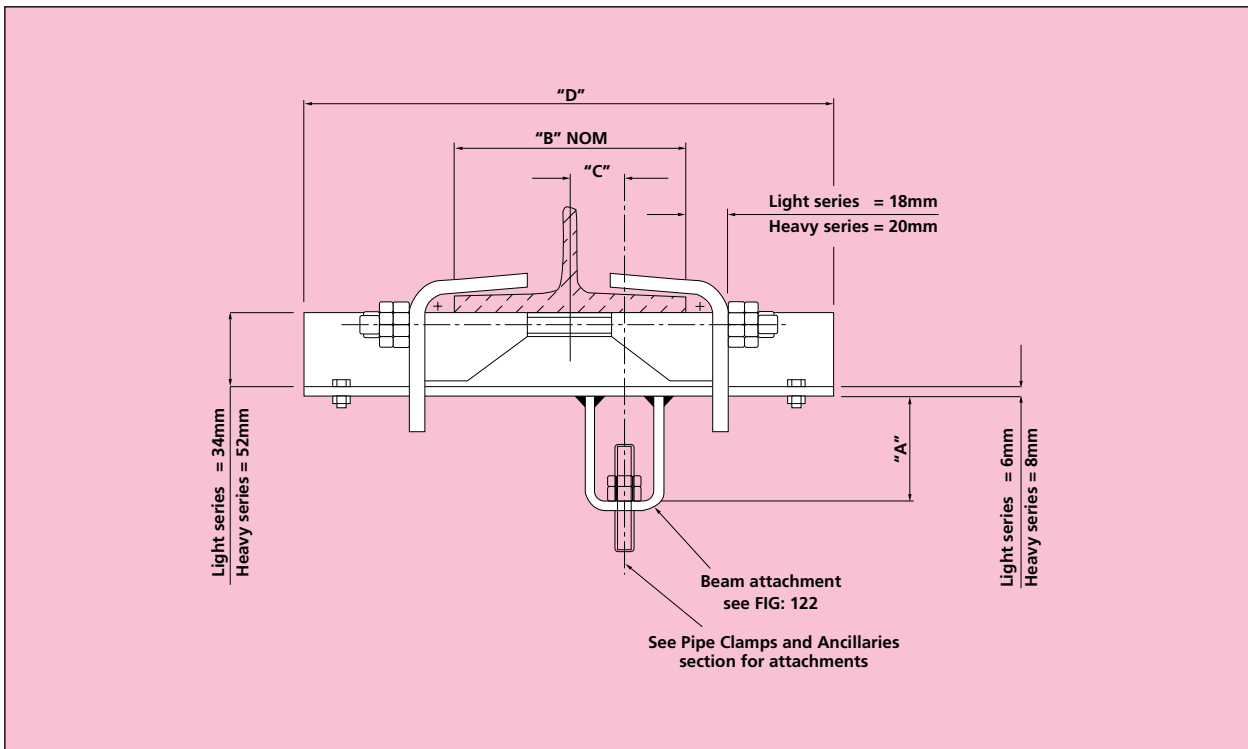
8

9

10

11

146 SPENCO® BEAM CLAMP WITH 122 ATTACHMENT



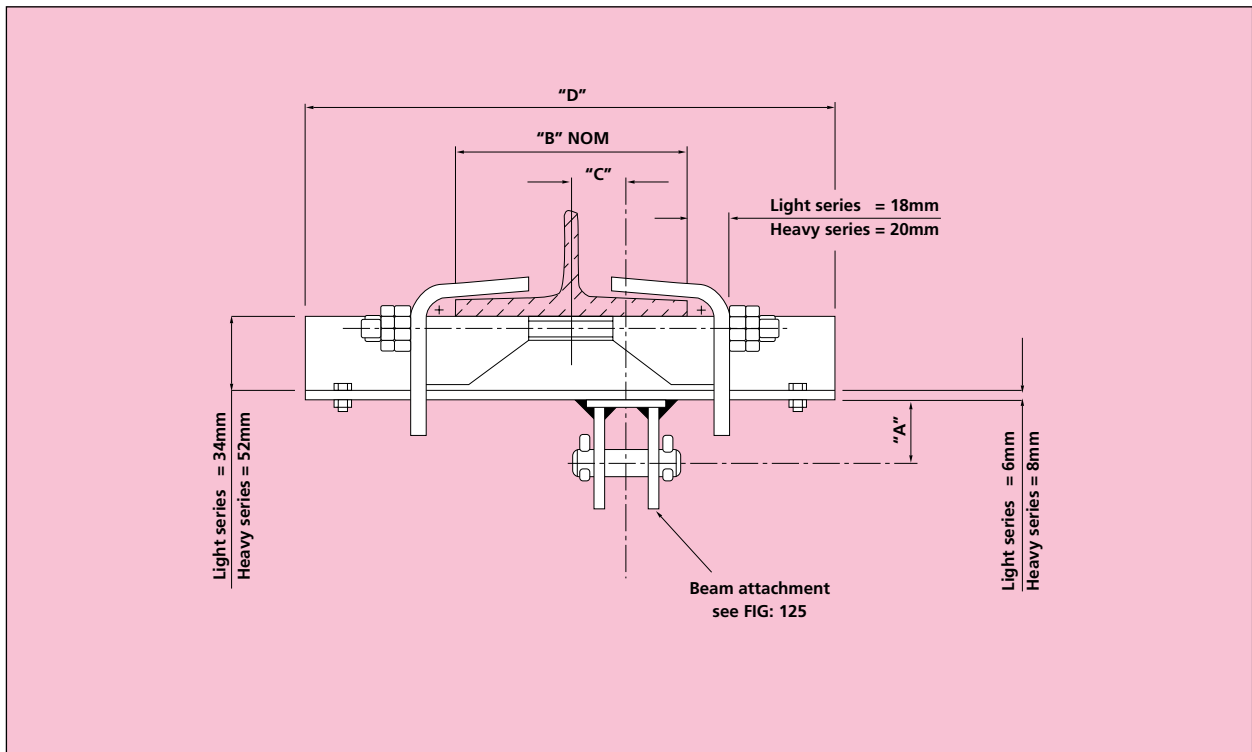
Beam Thickness "T"	Series		Light (SWL)		Heavy (SWL)	
	Light	Heavy	kg	kN	kg	kN
5 to 9.9	L1	H1	1000	9.8	2250	22
10 to 14.9	L2	H2	1000	9.8	2250	22
15 to 19.9	L3	H3	1000	9.8	2250	22
20 to 24.9	L4	H4	1000	9.8	2250	22
25 to 29.9	L5	H5	1000	9.8	2250	22
30 to 34.9	L6	H6	1000	9.8	2250	22
35 to 39.9	L7	H7	1000	9.8	2250	22
40 to 45	L8	H8	1000	9.8	2250	22

Note: SWL stated are on centre line of beam.

ORDER BY: FIG. NO., SERIES CODE, BEAM FLANGE WIDTH AND FIG. 122 SIZE.

PLEASE NOTE: TO CALCULATE LENGTH OF ANGLE MEMBER "D" = "B" + 85mm FOR LIGHT SERIES/HEAVY ROUNDED UP TO THE NEAREST 100mm. DIMENSION "A" = SEE FIG. NO. 122 — MAXIMUM ROD DIA = 20mm.

147 SPENCO® BEAM CLAMP WITH 125 ATTACHMENT



Beam Thickness "T"	Series		Light (SWL)		Heavy (SWL)	
	Light	Heavy	kg	kN	kg	kN
5 to 9.9	L1	H1	1000	9.8	2250	22
10 to 14.9	L2	H2	1000	9.8	2250	22
15 to 19.9	L3	H3	1000	9.8	2250	22
20 to 24.9	L4	H4	1000	9.8	2250	22
25 to 29.9	L5	H5	1000	9.8	2250	22
30 to 34.9	L6	H6	1000	9.8	2250	22
35 to 39.9	L7	H7	1000	9.8	2250	22
40 to 45	L8	H8	1000	9.8	2250	22

Note: SWL stated are on centre line of beam.

ORDER BY: FIG. NO., SERIES CODE, BEAM FLANGE WIDTH AND FIG. 125 SIZE.

PLEASE NOTE: TO CALCULATE LENGTH OF ANGLE MEMBER "D" = "B" + 85mm FOR LIGHT SERIES/HEAVY ROUNDED UP TO THE NEAREST 100mm. DIMENSION "A" = SEE FIG. NO. 125 — MAXIMUM PIN DIA = 20mm.

5

6

7

8

9

10

11