

PIPE ATTACHMENTS

CLEVIS HANGER

Figure 100
Figure 100PVC
Figure 100SS

Designed to support non-insulated, stationary lines from above allowing for approximately 1" to 1½" of vertical adjustment after the pipe is in place. The lower nut (not furnished) adjusts the pipe line to the proper elevation, the top nut (not furnished) prevents loosening due to vibration, and must be tightened securely to assure proper hanger performance.

Rated Loads are for up to 650° F (343° C) for carbon steel. Maximum PVC temperature is 140° F (60° C).

Material: Carbon Steel (Also available in Stainless Steel as Figure 100SS).

Compliance: Federal Specification A-A-1192A Type 1, MSS-SP-69 Type 1, BSPSS-BS3974, U.L. and F.M.

Finish: Plain, Painted, Electro-Galvanized, Hot-Dip Galvanized, Plastic Coated, Stainless Steel.

Ordering: Specify figure number, finish and pipe size. For Metric applications specify Figure M100 OR M100SS.

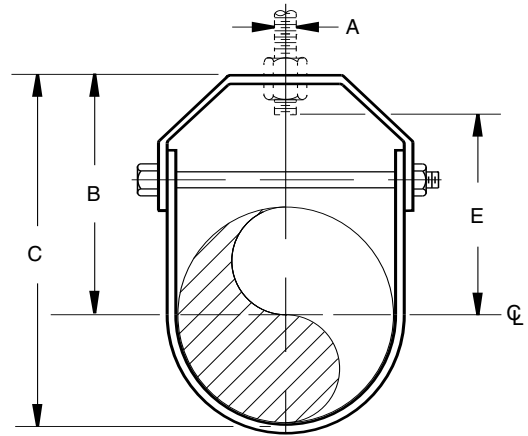


FIGURE 100 – CLEVIS HANGER

PIPE SIZE	MAXIMUM LOAD	A	B	C	ROD TAKE OUT E	WEIGHT EACH
½	610	⅜	2¾	3⅞	1⅞	0.27
15	2714	M10	70	79	48	0.12
¾	610	⅜	2⅞	2¾	1½	0.29
20	2714	M10	54	70	38	0.13
1	610	⅜	3	3¾	2¼	0.33
25	2714	M10	76	95	57	0.15
1¼	610	⅜	3⅞	4	2¼	0.36
32	2714	M10	79	102	57	0.16
1½	610	⅜	3¼	4¼	2⅜	0.42
40	2714	M10	83	108	60	0.19
2	610	⅜	3⅞	4⅞	3⅞	0.52
50	2714	M10	86	117	79	0.24
2½	1130	½	4⅞	5⅞	3⅞	0.61
65	5027	M12	105	143	79	0.28
3	1130	½	5	6⅞	4⅞	0.90
80	5027	M12	127	175	105	0.41
3½	1130	½	4½	6⅞	3⅞	0.99
90	5027	M12	114	168	92	0.45
4	1430	⅝	5⅞	7¾	4⅞	1.40
100	6361	M16	137	197	111	0.64
5	1430	⅝	6	8⅞	5	2.10
125	6361	M16	152	225	127	0.95
6	1940	¾	7	10½	5⅞	3.00
150	8630	M20	178	267	149	1.36
7	2000	¾	7⅞	11¾	6½	5.42
	8897	M20	194	298	165	2.46
8	2000	¾	8½	12¾	6¾	4.50
200	8897	M20	216	324	171	2.04
10	3600	⅞	10	15⅞	8¼	9.10
250	16014	M20	254	391	210	4.13
12	3800	⅞	11⅞	17½	9¼	11.75
300	16904	M20	283	445	235	5.33
14	4200	1	12½	19½	10⅞	14.25
350	18683	M24	318	495	270	6.46
16	4800	1	15	23	13⅞	20.75
400	21352	M24	381	584	333	9.41
18	4800	1	15¾	24¾	13¾	23.00
450	21352	M24	400	629	349	10.43
20	4800	1¼	17⅞	27⅞	15¼	41.50
500	21352	M30	441	695	387	18.82
24	4800	1¼	19⅞	31⅞	17½	50.00
600	21352	M30	498	803	445	22.68
30	6000	1¼	24¾	40¾	21¾	68.08
750	26690	M30	629	1035	552	30.88
36	9500	1½	32⅞	50⅞	30	68.68
900	42260	M36	835	1292	762	31.15

COPPER CLEVIS HANGER

Figure 100CT

Designed to support non-insulated, stationary copper tubing lines from above, allowing for approximately 1" to 1½" of vertical adjustment after the tubing is in place. The lower nut (not furnished) adjusts the pipe line to the proper elevation, the top nut (not furnished) prevents loosening due to vibration, and must be tightened securely to assure proper hanger performance.

Material: Carbon Steel.

Compliance: Federal Specification A-A-1192A Type 1, MSS-SP-69 Type 1 and BSPSS-BS3974. Rated Loads are for up to 650° F (343° C).

Finish: Copper.

Ordering: Specify tubing size, and figure number. For Metric applications specify Figure M100CT.

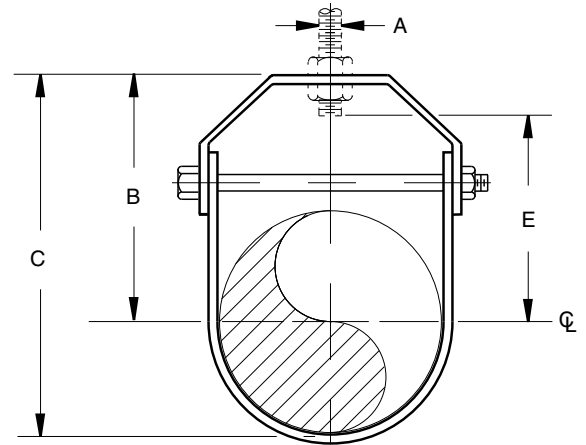


FIGURE 100CT – COPPER CLEVIS HANGER

TUBE SIZE	MAXIMUM LOAD	A	B	C	ROD TAKE OUT E	WEIGHT EACH
½	150	⅜	2⅞	3⅜	2⅞	0.16
15	667	M10	73	79	54	0.07
¾	250	⅜	2⅞	3	1⅞	0.16
20	1112	M10	67	76	48	0.07
1	250	⅜	2⅞	3⅜	1⅞	0.19
25	1112	M10	67	79	48	0.09
1¼	250	⅜	3⅜	3⅜	2⅞	0.22
32	1112	M10	79	95	60	0.10
1½	250	⅜	3⅜	4⅞	2⅞	0.29
40	1112	M10	86	105	67	0.13
2	250	⅜	3⅜	4⅞	2⅞	0.32
50	1112	M10	86	111	67	0.15
2½	350	½	3⅜	4⅞	2⅞	0.72
65	1557	M12	92	124	67	0.33
3	350	½	3⅜	5⅞	2⅞	0.82
80	1557	M12	98	137	73	0.37
3½	350	½	4⅞	5⅞	3⅜	0.91
90	1557	M12	105	149	79	0.41
4	350	½	4⅞	6¼	3⅞	1.07
100	1557	M12	114	159	89	0.49
5	900	⅝	5	7¼	3⅞	1.76
125	4004	M16	127	197	98	0.80
6	900	⅝	5¼	8⅞	4⅞	1.92
150	4004	M16	4	225	117	0.87

DIMENSIONS		TEMPERATURE	LOADS	WEIGHT
INCHES	FAHRENHEIT	POUNDS	POUNDS	
MILLIMETERS	CELSIUS	NEWTONS	KILOGRAMS	

PIPE ATTACHMENTS

CLEVIS HANGER FOR DUCTILE IRON AND A.W.W.A. CAST IRON PIPE

Figure 100DI

Designed to support non-insulated, stationary ductile iron and A.W.W.A. cast iron lines from above allowing for approximately 1" to 1½" of vertical adjustment after the pipe is in place. The lower nut (not furnished) adjusts the pipe line to the proper elevation, the top nut (not furnished) prevents loosening due to vibration, and must be tightened securely to assure proper hanger performance.

Material: Carbon Steel.

Compliance: MSS-SP-69 Type 1, A-A-1192A Type 1.

Finish: Plain, Painted, Electro-Galvanized, Hot-Dip Galvanized.

Ordering: Specify pipe size, figure number, and finish. For Metric applications specify Figure M100DI.

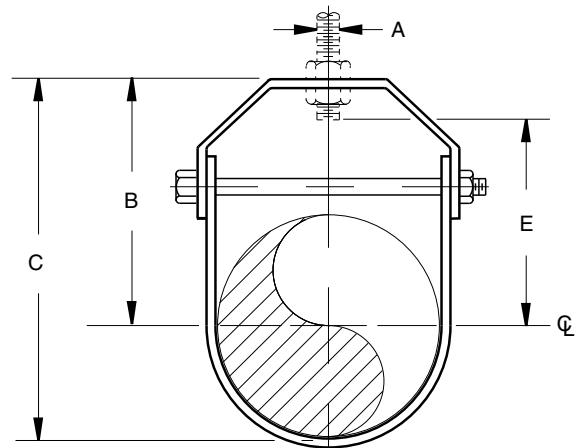


FIGURE 100DI – CLEVIS HANGER FOR DUCTILE IRON PIPE

PIPE SIZE	MAXIMUM LOAD	A	B	C	ROD TAKE OUT E	WEIGHT EACH
4	1430	5/8	5 3/4	8 3/4	4 3/4	2.08
150	6361	M16	146	206	111	0.94
6	1940	7/8	7	10 3/4	5 1/2	2.78
200	8630	M20	178	264	140	1.26
8	2000	7/8	9 1/4	13 3/4	7 3/4	4.47
250	8897	M20	235	349	197	2.03
10	3600	7/8	10 3/4	15 3/4	8 3/4	8.87
300	16014	M20	260	400	219	4.02
12	3800	7/8	12 3/4	19 3/4	11	12.0
350	16904	M20	321	489	279	5.46
14	4200	1	14 3/4	21 3/4	12 3/4	15.2
400	18683	M24	359	552	311	6.87
16	4800	1	14 3/4	23 3/4	13	23.6
450	21352	M24	378	600	330	10.7
18	4800	1	17 3/4	27 3/4	15 3/4	25.9
500	21352	M24	451	705	400	11.7
20	4800	1 1/4	18 3/4	29 1/2	16 1/2	44.3
600	21352	M30	476	749	419	20.1
24	4800	1 1/4	21 1/4	34 3/4	19 1/2	53.5
700	21352	M30	556	883	495	24.2

DIMENSIONS		TEMPERATURE	LOADS	WEIGHT
INCHES	FAHRENHEIT		POUNDS	POUNDS
MILLIMETERS	CELSIUS		NEWTONS	KILOGRAMS

ELONGATED CLEVIS HANGER

Figure 100EL

The 100EL is designed for the suspension of insulated stationary pipe lines. It will accommodate 2 inches (51mm) of insulation up to 1½" (40mm) pipe, and 4 inches (102mm) of insulation for pipe 2" (50mm) and larger.

Hanger locking nut above the clevis must be tightened securely to assure proper hanger performance. The nuts are not included.

Rated Loads are for up to 650° F (343° C).

Material: Carbon Steel.

Finish: Plain, Painted, Electro-Galvanized, Hot-Dip Galvanized.

Approvals: Federal Specification A-A-1192A Type 1, MSS-SP-69 Type 1 and BSPSS-BS3974.

Ordering: Specify figure number, finish, and pipe size. For Metric applications specify Figure M100EL.

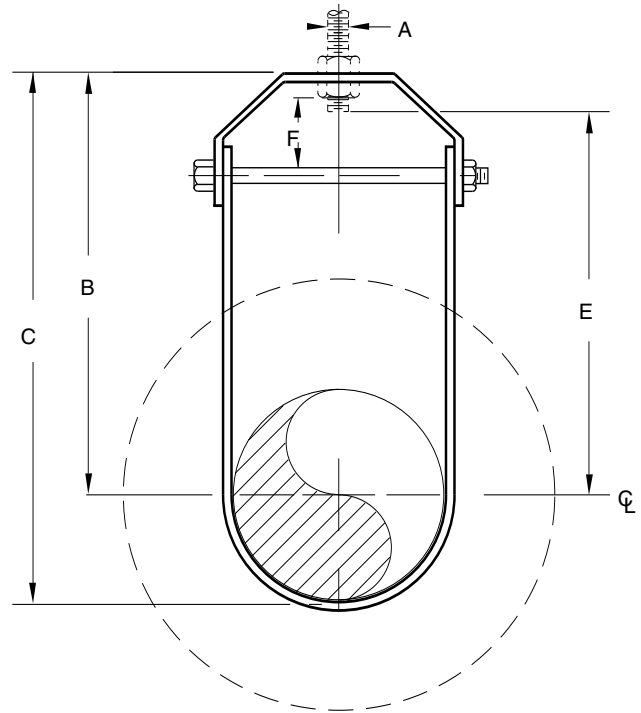


FIGURE 100EL – ELONGATED CLEVIS HANGER

PIPE SIZE	MAXIMUM LOAD	A	B	C	E	F	WEIGHT EACH
½	600	⅜	3¾	4¼	3½	⅝	0.66
15	2669	M10	95	108	89	16	0.30
¾	600	⅜	4¼	4⅞	3⅞	⅝	0.70
20	2669	M10	108	124	98	16	0.32
1	600	⅜	5⅛	5¾	4¾	1⅝	0.74
25	2669	M10	130	146	121	41	0.34
1¼	600	⅜	5⅜	6⅛	4⅞	1⅝	0.78
32	2669	M10	137	156	124	41	0.35
1½	600	⅜	5½	6⅜	5	1½	0.81
40	2669	M10	140	162	127	38	0.37
2	600	⅜	7⅝	8¾	7⅞	1⅝	0.88
50	2669	M10	194	222	181	41	0.40
2½	1100	½	7⅞	9¼	7¼	1⅝	1.83
65	4893	M12	200	235	184	29	0.83
3	1100	½	8⅛	9⅞	7½	1⅝	1.97
80	4893	M12	206	251	191	29	0.89
3½	1100	½	8⅜	10⅜	7¾	1¼	2.06
90	4893	M12	213	264	197	32	0.93
4	1400	⅝	9⅝	11⅞	8⅞	1¾	2.57
100	6228	M16	244	302	225	44	1.17
5	1400	⅝	10⅜	13⅛	9⅝	1⅞	3.00
125	6228	M16	264	333	244	48	1.36
6	1900	¾	10⅞	14⅞	10	1⅝	4.05
150	8452	M20	276	359	254	41	1.84
8	2000	⅞	12⅝	16⅞	11⅝	2⅞	6.00
200	8897	M20	321	429	295	54	2.72
10	3600	⅞	13¼	18⅝	12⅞	2⅜	10.10
250	16014	M20	337	562	308	60	4.58
12	3800	⅞	15¾	22⅞	14⅝	2⅝	12.90
300	16904	M20	400	562	371	67	5.85

DIMENSIONS		TEMPERATURE	LOADS	WEIGHT
INCHES	FARENHEIT		POUNDS	POUNDS
MILLIMETERS	CELSIUS		NEWTONS	KILOGRAMS

PIPE ATTACHMENTS

REFRIGERATION HANGER AND SHIELD

Figure 100SH

This hanger is a combination of the Figure 100 and Figure 265 where the protection shield is welded to the clevis hanger. Designed to support insulated, stationary lines from above and prevent crushing the insulation or breaking the vapor barrier. It allows for approximately 1" to 1½" of vertical adjustment after the pipe is in place. The lower nut (not furnished) adjusts the pipe line to the proper elevation, the top nut (not furnished) prevents loosening due to vibration, and must be tightened securely to assure proper hanger performance.

Material: Carbon Steel.

Compliance: Federal Specification A-A-1192A Type 1, MSS-SP-69 Type 1 and BSPSS-BS3974.

Finish: Plain, Painted, Electro-Galvanized.

Ordering: Specify pipe size, insulation thickness, figure number, and finish. For Metric applications specify Figure M100SH.

Dimensional Data: See Figure 100 and Figure 265P.

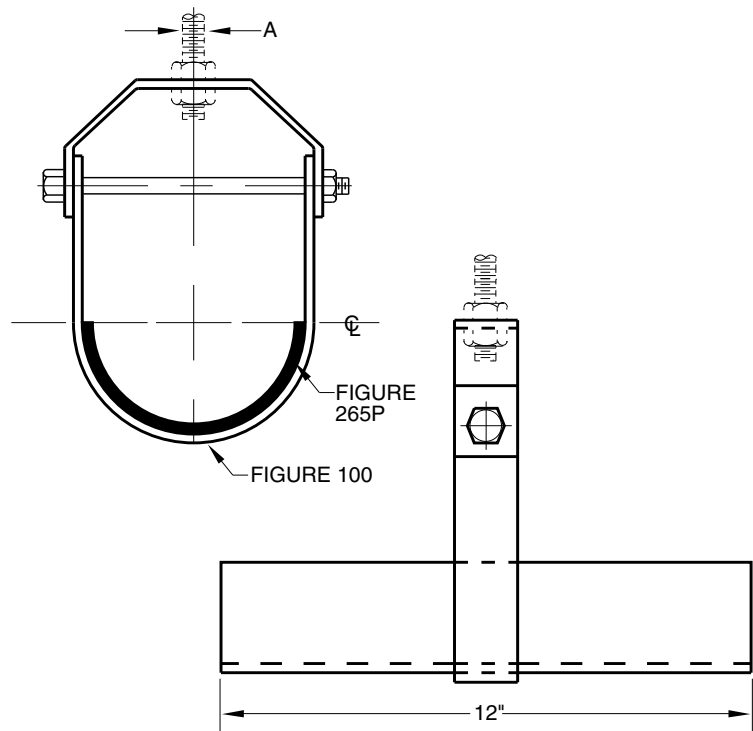


FIGURE 100SH - REFRIGERATION HANGER AND SHIELD

HANGER SIZE	ROD SIZE A	½" Cov. 13 Cov. Bare Pipe Size	1" Cov. 25 Cov.	Insulation Thickness			
				1½" Cov. 38 Cov.	2" Cov. 51 Cov.	2½" Cov. 64 Cov.	3" Cov. 76 Cov.
1½	¾	½					
40	M10	15					
2	¾	¾ - 1					
50	M10	20 - 25					
2½	½	1¼ - 1½	½				
65	M12	32 - 40	15				
3	½	2	¾ - 1				
80	M12	50	20 - 25				
3½	½	2½	1¼ - 1½	½ - ¾			
90	M12	65	32 - 40	15 - 20			
4	¾	3	2	1 - 1¼			
100	M16	80	50	25 - 32			
5	¾	3½ - 4	2½ - 3	1½ - 2	½ - 1¼		
125	M16	90 - 100	65 - 80	40 - 50	15 - 32		
6	¾	5	3½ - 4	2½ - 3	1½ - 2	½ - 1¼	
150	M20	125	90 - 100	65 - 80	40 - 50	15 - 32	
7	¾	6	5	3½ - 4	2½ - 3	1½ - 2	½ - 1¼
M20	150	125	90 - 100	65 - 80	40 - 50	15 - 32	
8	¾		6	5	3½ - 4	2½ - 3	1½ - 2
200	M20		150	125	90 - 100	65 - 80	40 - 50
10	¾	8	8	6	5 - 6	3½ - 4	2½ - 4
250	M20	200	200	150	125 - 150	90 - 100	65 - 100
12	¾	10	10	8	8	5 - 6	5 - 6
300	M20	250	250	200	200	125 - 150	125 - 150
14	1	12		10		8	
350	M24	300		250		200	
16	1	14	12 - 14	12	10	10	8
400	M24	350	300 - 350	300	250	250	200
18	1	16	16	14	12 - 14	12	10
450	M24	400	400	350	300 - 350	300	250
20	1¼			16	16	14	12 - 14
500	M30			400	400	350	300 - 350
24	1¼					16	16
600	M30					400	400

DIMENSIONS TEMPERATURE LOADS WEIGHT

INCHES	FAHRENHEIT	POUNDS	POUNDS
MILLIMETERS	CELSIUS	NEWTONS	KILOGRAMS