

## STRUCTURE ATTACHMENTS

### CONCRETE ATTACHMENT

#### Figure 1020

The Figure 1020 Type 1 is for attaching support assemblies to concrete structures where little or no movement is anticipated. Used with a Fig 133 Threaded Rod or Figure 94 All Thread Rod.

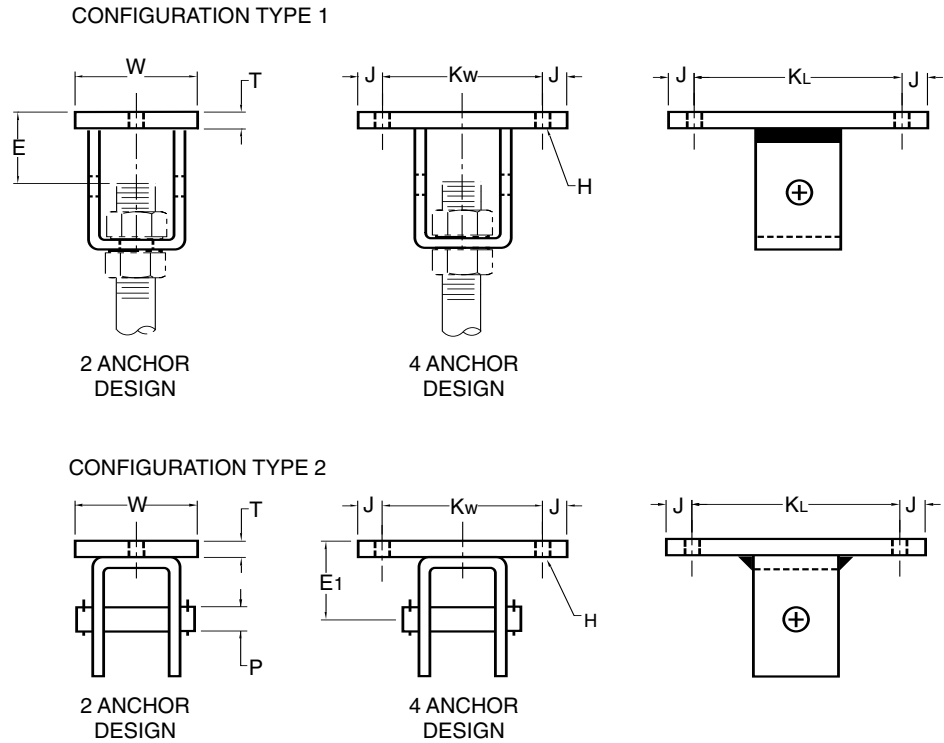
The Figure 1020 Type 2 is for attaching support assemblies to concrete structures where movement is anticipated. Used with a Fig 279 Weldless Eyenut or Figure 93 Welded Eyerod. A two-anchor pattern is used on sizes  $\frac{3}{8}$ " thru  $\frac{5}{8}$ " and all others use four anchors.

**Material:** Carbon Steel.

**Finish:** Plain, Painted, Electro-Galvanized, Hot-Dip Galvanized.

**Ordering:** Specify figure number, finish, and rod size. For Metric applications specify Figure M1020 Type 1 or Type 2.

Made special to customer order.



#### FIGURE 1020 – CONCRETE ATTACHMENT

ROD SIZE	MAX LOAD	E	E <sub>1</sub>	H*	P	J	K <sub>L</sub>	K <sub>W</sub>	T	W	WGT EACH W/PIN	WGT EACH W/O PIN
$\frac{3}{8}$	610	2 $\frac{1}{8}$	2 $\frac{1}{4}$	$\frac{1}{2}$	$\frac{1}{2}$	1	4	N/A	$\frac{1}{4}$	4	2.8	2.7
M10	2714	54	57	13	13	25	102	N/A	6	102	1.3	1.2
$\frac{1}{2}$	1130	2 $\frac{1}{8}$	2 $\frac{3}{8}$	$\frac{5}{8}$	$\frac{5}{8}$	1	5	N/A	$\frac{3}{8}$	4	4.1	3.9
M12	5027	54	60	16	16	25	127	N/A	10	102	1.9	1.8
$\frac{5}{8}$	1810	2 $\frac{1}{4}$	2 $\frac{1}{2}$	$\frac{3}{4}$	$\frac{3}{4}$	1	6	N/A	$\frac{1}{2}$	4	5.8	5.5
M16	8052	57	64	19	19	25	152	N/A	13	102	2.6	2.5
$\frac{3}{4}$	2710	2 $\frac{1}{8}$	2 $\frac{3}{8}$	$\frac{5}{8}$	$\frac{7}{8}$	1	5	5	$\frac{3}{8}$	N/A	7.7	7.1
M20	12055	54	60	16	22	25	127	127	10	N/A	3.5	3.2
$\frac{7}{8}$	3770	3 $\frac{3}{8}$	3 $\frac{5}{8}$	$\frac{7}{8}$	1	1 $\frac{1}{4}$	6 $\frac{1}{2}$	7	$\frac{5}{8}$	N/A	19.8	18.6
M20	16770	86	92	22	25	32	165	165	16	N/A	9.0	8.4
1	4960	3 $\frac{3}{8}$	3 $\frac{5}{8}$	$\frac{7}{8}$	1 $\frac{1}{8}$	1 $\frac{1}{4}$	6 $\frac{1}{2}$	7	$\frac{5}{8}$	N/A	19.8	18.6
M24	22064	86	92	22	29	32	165	165	16	N/A	9.0	8.4
$1\frac{1}{4}$	8000	3 $\frac{5}{8}$	3 $\frac{3}{4}$	1	1 $\frac{3}{8}$	2	8	8	$\frac{3}{4}$	N/A	41.0	38.7
M30	35587	92	95	25	35	51	203	203	19	N/A	18.6	17.6
$1\frac{1}{2}$	11630	5	5	1 $\frac{1}{8}$	1 $\frac{3}{8}$	2	8	8	1	N/A	60.0	56.4
M36	51735	127	127	29	41	51	203	203	25	N/A	27.2	25.6
$1\frac{3}{4}$	15700	6 $\frac{1}{4}$	6 $\frac{1}{4}$	1 $\frac{3}{8}$	2	2	10	10	1 $\frac{1}{4}$	N/A	93.6	88.0
M42	69840	159	159	35	51	51	254	254	32	N/A	42.5	39.9
2	20700	6 $\frac{1}{2}$	6 $\frac{1}{4}$	1 $\frac{3}{8}$	2 $\frac{1}{4}$	2	10	10	1 $\frac{1}{4}$	N/A	100.0	92.0
M48	92082	165	159	35	57	51	254	254	32	N/A	45.4	41.7

\* Holes are  $\frac{1}{8}$ " larger than recommended anchor bolt diameter to allow for installation tolerance.

### LIGHT DUTY CONCRETE ATTACHMENT

#### Figure 1020LD

The Figure 1020LD is similar in design and function to the Figure 1020, but is intended where smaller loads will be imposed. Contact your local Carpenter & Paterson Sales Office for more details.