

# PIPE ROLLS

## ADJUSTABLE ROLL SUPPORT

**Figure 109**

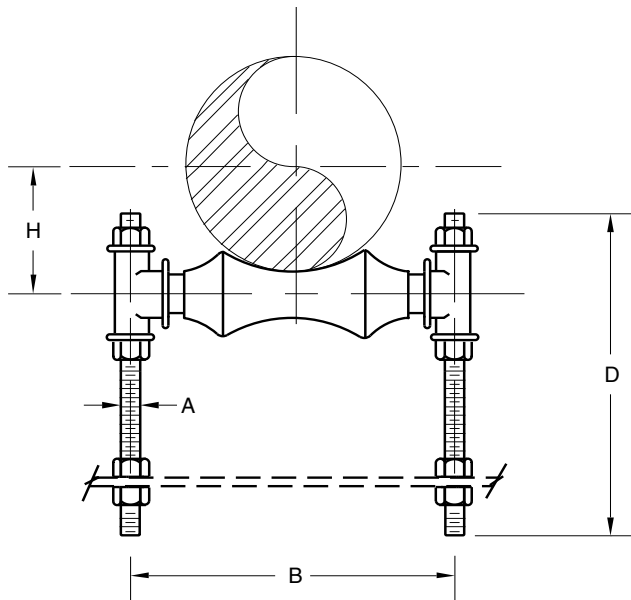
The Figure 109 is designed for longitudinal movement of pipe where vertical adjustment of up to six inches of is required. This part is normally used directly above the supporting structure.

**Material:** Cast Iron Pipe Roll and Sockets, Carbon Steel Axle, Continuous Thread Rods, and Hex Nuts. Do not exceed 450° F / 232° C at the contact point to the roll.

**Finish:** Plain, Painted, Electro-Galvanized, Hot-Dip Galvanized.

For pipe with insulation and a pipe covering protection saddle the Figure 109 will have to be oversized to suit. Please see the Table for the Figure 142 which shows the correct sizing for insulated pipe.

**Ordering:** Specify pipe size, figure number, and finish. For Metric applications specify Figure M109.



**FIGURE 109 – ADJUSTABLE ROLL SUPPORT**

PIPE SIZE	MAX LOAD	A	B	D	H	WGT. EACH
1¼	300	¾	3¾	7¼	1¼	1.08
32	1335	M10	86	184	32	0.49
1½	300	¾	3¾	7¼	1½	1.11
40	1335	M10	92	184	35	0.50
2	300	¾	4¾	7¼	1½	1.65
50	1335	M10	105	184	41	0.75
2½	600	½	5½	8	2	2.72
65	2669	M12	140	203	51	1.23
3	600	½	6¾	8	2¼	2.72
80	2669	M12	156	203	57	1.23
3½	700	½	7¾	8	2½	2.72
90	3114	M12	181	203	67	1.23
4	700	¾	7¾	8½	2¾	3.91
100	3114	M16	181	216	73	1.77
5	700	¾	8¾	9	3½	4.63
125	3114	M16	213	229	89	2.10
6	1000	¾	9¾	9	4	7.07
150	4448	M20	244	229	102	3.21
8	1300	¾	12	10	5¾	11.40
200	5783	M20	305	254	130	5.15
10	1700	¾	14¾	11	6¾	13.70
250	7562	M20	359	279	162	6.22
12	2300	¾	16¾	12	7½	15.90
300	10231	M20	410	305	191	7.21
14	3075	1	17¾	12	8¾	28.70
350	13679	M24	451	305	213	13.00
16	3970	1	20½	18	9½	42.50
400	17660	M24	521	457	241	19.30
18	4200	1	22¾	18	10½	46.60
450	18683	M24	562	457	267	21.10
20	4550	1¼	24¾	18	11¾	66.20
500	20240	M30	613	457	295	30.00
24	6160	1½	28¾	24	14	102.50
600	27402	M36	733	610	356	46.50
30	7290	1½	35½	24	17½	186.80
750	32429	M36	902	610	445	84.70

DIMENSIONS		TEMPERATURE	LOADS	WEIGHT
INCHES	FAHRENHEIT		POUNDS	POUNDS
MILLIMETERS	CELSIUS		NEWTONS	KILOGRAMS