

## PIPE ROLLS

### ADJUSTABLE ROLL SUPPORT

**Figure 142**

The Figure 142 is designed for longitudinal movement of pipe where vertical adjustment is required. Although primarily used for support of the pipe, this component may also be placed over the pipe to act as a guide.

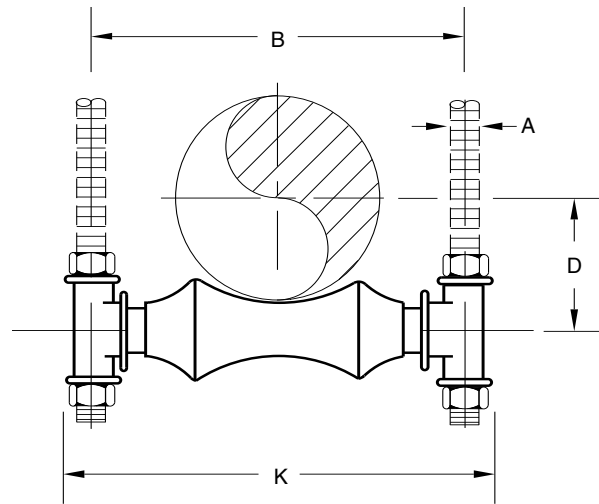
**Material:** Cast Iron Pipe Roll and Sockets with a Carbon Steel Axle. Do not exceed 450° F / 232° C at the contact point to the roll.

**Compliance:** A-A-1192A Type 42, MSS SP-69 Type 41.

**Finish:** Plain, Painted, Electro-Galv., Hot-Dip Galv.

For pipe with insulation and a pipe covering protection saddle the Figure 142 will have to be oversized to suit. Please see the Table below which shows the correct sizing for insulated pipe.

**Ordering:** Specify pipe size, figure number, and finish. For Metric applications specify Figure M142.



**FIGURE 142 – ADJUSTABLE ROLL SUPPORT**

PIPE SIZE	MAX LOAD	ROD SIZE A	B	D	K	WGT. EACH
1	600	3/8	3	1	4 1/2	0.45
25	2669	M10	76	25	105	0.20
1 1/2	600	3/8	3 3/8	1 1/4	4 1/2	0.48
32	2669	M10	86	32	114	0.22
1 1/2	600	3/8	3 3/8	1 3/8	4 3/4	0.51
40	2669	M10	92	35	121	0.23
2	600	3/8	4 1/4	1 1/2	5 1/4	0.57
50	2669	M10	105	41	133	0.26
2 1/2	600	1/2	5 1/2	2	7	1.48
65	2669	M12	140	51	178	0.67
3	700	1/2	6 1/2	2 1/4	7 1/2	1.48
80	3114	M12	156	57	194	0.67
4	700	3/8	7 1/2	2 1/2	8 1/2	1.78
100	3114	M16	181	73	219	0.81
5	700	3/8	8 3/8	3 1/2	9 1/2	2.42
125	3114	M16	213	89	251	1.10
6	1000	3/4	9 3/8	4	11 3/8	3.96
150	4448	M20	244	102	289	1.80
7	1200	3/4	10 3/4	4 1/4	12 1/2	5.99
175	5338	M20	273	121	318	2.72
8	1300	3/8	12	5 1/2	14	6.43
200	5783	M20	305	130	356	2.92
10	1700	7/8	14 1/2	6 1/4	16	8.45
250	7562	M20	359	159	406	3.83
12	2400	7/8	16 1/2	7 1/2	18	10.20
300	10676	M20	410	191	457	4.63
14	3100	1	17 3/4	8 3/8	20	20.90
350	13790	M24	451	213	508	9.48
16	3900	1	20 1/2	9 1/2	22 1/2	26.07
400	17349	M24	521	241	562	11.80
18	4200	1	22 1/2	10 1/2	24 3/8	36.59
450	18683	M24	562	267	619	16.60
20	4500	1 1/4	24 1/2	11 1/2	26 1/2	39.00
500	20018	M30	613	295	676	17.70
24	6100	1 1/2	28 1/2	14	32 1/2	66.90
600	27135	M36	733	356	816	30.30
30	7200	1 1/2	35 1/2	17 1/2	39 1/2	134.00
750	32028	M36	902	445	1013	60.80

DIMENSIONS		TEMPERATURE	LOADS	WEIGHT
INCHES	FAHRENHEIT		POUNDS	POUNDS
MILLIMETERS	CELSIUS		NEWTONS	KILOGRAMS

## PIPE ROLLS

Figure 142 PIPE SIZE OF ROLL	PIPE SIZE OF COVERING PROTECTION SADDLE to be used with Figure 142					
	Figure 351 1" Cov. 25	Figure 352 1½" Cov. 38	Figure 353 2" Cov. 51	Figure 354 2½" Cov. 64	Figure 355 3" Cov. 76	Figure 356 4" Cov. 102
2½	¾ to 1					
65	20 to 25					
3	1¼ to 1½	¾ to 1				
80	32 to 40	20 to 25				
4	2½ to 3	1½	¾ to 1			
100	65 to 80	40	20 to 25			
5	3½	2 to 2½	1¼ to 1½	¾ to 1		
125	90	50 to 65	32 to 40	20 to 25		
6	4 to 5	3 to 3½	2 to 2½	1¼ to 1½		
150	100 to 125	80 to 90	50 to 65	32 to 40		
7	6	4 to 5	3 to 4	2 to 2½	2 to 2½	
175	150	100 to 125	80 to 100	50 to 65	50 to 65	
8		6	5	3 to 3½	3 to 3½	
200		150	125	80 to 90	80 to 90	
10	8	8	6	4 to 5	4 to 5	
250	200	200	150	100 to 125	100 to 125	
12	10	10	8	6	6 to 8	4 to 6
300	250	250	200	150	150 to 200	100 to 150
14	12	12	10	8		
350	300	300	250	200		
16	14	14	12 to 14	10	10	8
400	350	350	300 to 350	250	250	200
18	16	16	16	12 to 14	12 to 14	10
450	400	400	400	300 to 400	300 to 400	250
20	18	18		16		12
500	450	450		400		300
24	20	20	18 to 20	18 to 20	16 to 20	14 to 18
600	500	500	450 to 500	450 to 500	400 to 450	350 to 450
30	24	24	24	24	24	20 to 24
750	600	600	600	600	600	500 to 600

DIMENSIONS		TEMPERATURE	LOADS	WEIGHT
INCHES	FAHRENHEIT	POUNDS	POUNDS	
MILLIMETERS	CELSIUS	NEWTONS	KILOGRAMS	