

PIPE ROLLS

PIPE ROLL

Figure 173

The Figure 173 is used in conjunction with our Figure 140, 142, and 333 Roll Hangers. The inside of the roll is cored. A special non-conductive roll is available upon request.

Material: Cast Iron.

Do not exceed 450° F / 232° C at the contact point to the roll.

Finish: Plain, Painted, Hot-Dip Galvanized.

Note: Not sold as an individual product.

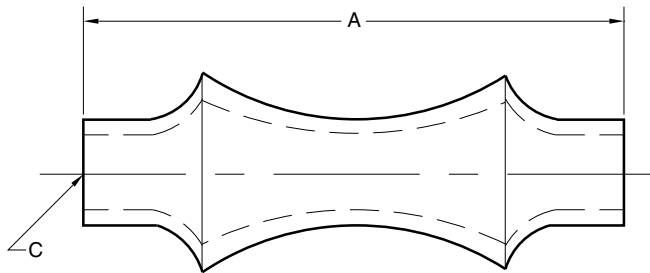


FIG. 173 – PIPE ROLL

PIPE SIZE	A	Roll Rod Diameter C	WEIGHT EACH
1	1½	¾	0.12
25	38	10	0.05
1¼	17½	¾	0.18
32	48	10	0.08
1½	2¼	¾	0.24
40	54	10	0.11
2	27½	¾	0.34
50	73	10	0.15
2½	3¾	½	0.37
65	79	13	0.17
3	3¾	½	0.42
80	95	13	0.19
3½	4¾	½	0.68
90	111	13	0.31
4	4¾	½	0.90
100	121	13	0.41
5	5¾	¾	1.29
125	149	16	0.59
6	6¾	¾	1.8
150	171	16	0.82
7	8	1	2.4
	203	19	1.09
8	8¾	¾	3.3
200	225	19	1.50
10	11	7/8	4.8
250	279	22	2.18
12	13	7/8	10.0
300	330	22	4.5
14	14¾	1	12.0
350	365	25	5.4
16	17	1¼	19.0
400	432	32	8.6
18	18¾	1¼	22.5
450	467	32	10.2
20	20¾	1¼	22.6
500	518	32	10.3
24	24¼	1½	43.7
600	616	38	19.8
30	30¾	1¾	98
750	768	44	44.5

DIMENSIONS		TEMPERATURE	LOADS	WEIGHT
INCHES	FAHRENHEIT	POUNDS	POUNDS	
MILLIMETERS	CELSIUS	NEWTONS	KILOGRAMS	