

BEAM CLAMPS

WIDE MOUTH TOP BEAM CLAMP WITH LOCKING NUT

Figure 192W

The Figure 192W is designed for roof installations with bar joist type construction as well as to be attached mechanically to the top or bottom flange of steel beams. A locking nut is provided and when properly tightened prevents loosening due to vibration. The full body tapping feature for the rod allows for extra adjustment after installation. A Figure 192RS Retaining Strap may also be required by various codes.

Install in accordance with MSS-SP69 set screw torque values. Maximum loads are based upon full thread engagement by the rod. When using a Retaining Strap the maximum allowable flange thickness is reduced by $\frac{1}{8}$ ".

Material: Malleable Iron with Hardened Steel Cup Point Set Screw.

Compliance: MSS-SP-69 (Type 19).

Finish: Plain, Electro-Galvanized.

Ordering: Specify rod size, figure number, and finish.
For Metric applications specify Figure M192W.

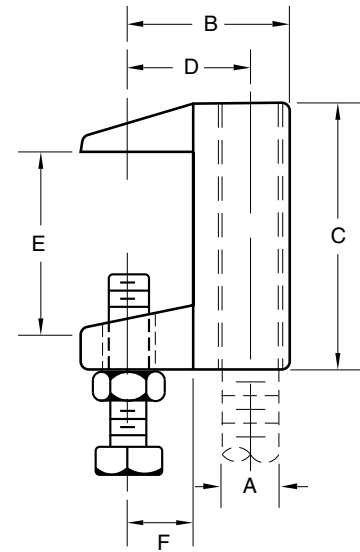


FIGURE 192W – WIDE MOUTH TOP BEAM CLAMP

ROD SIZE A	MAXIMUM LOAD	MAXIMUM PIPE SIZE	B	C	D	E	F	WEIGHT EACH
$\frac{3}{8}$	400	4	$1\frac{1}{8}$	$1\frac{1}{8}$	$1\frac{1}{16}$	$1\frac{1}{4}$	$\frac{1}{2}$	0.37
M10	1779	100	41	48	27	32	13	0.17
$\frac{1}{2}$	500	4	$1\frac{1}{8}$	$1\frac{1}{8}$	$1\frac{1}{16}$	$1\frac{1}{4}$	$\frac{1}{2}$	0.35
M12	2224	200	41	48	27	32	13	0.16
$\frac{5}{8}$	850	5	$2\frac{1}{4}$	$2\frac{3}{16}$	$1\frac{3}{8}$	$1\frac{1}{4}$	$\frac{3}{4}$	0.49
M16	3781	125	57	59	35	32	19	0.22
$\frac{3}{4}$	900	6	$2\frac{3}{8}$	$2\frac{3}{8}$	$1\frac{3}{8}$	$1\frac{1}{4}$	$\frac{3}{4}$	0.87
M20	4004	150	60	60	35	32	19	0.39

DIMENSIONS		TEMPERATURE	LOADS	WEIGHT
INCHES	FAHRENHEIT	POUNDS	POUNDS	POUNDS
MILLIMETERS	CELSIUS	NEWTONS	KILOGRAMS	