

C-CLAMPS

“C” CLAMP RETAINING CLIP

Figure 22

The Figure 22 is designed for use with Figure 238 and 193 “C” Clamps, to prevent movement of the “C” Clamp due to vibration after installation. Available in up to 4½", 6", 8", 10" and 14" lengths (One inch should be added to beam flange width to determine length; select next largest strap length if between standard lengths.) The Figure 196 ⅜" (M10) uses a Type 1, while all other sizes use a Type 2.

Type 1 is for Figure 238, ⅜" (M10), ½" (M12), ⅝" (M16), ¾" (M20) and 7/8" (M20) rod sizes.

Type 2 is for Figure 193, ½" (M12), ⅝" (M16) and ¾" (M20) rod sizes only.

Material: Carbon Steel.

Finish: Plain, Painted, Electro-Galvanized.

Ordering: Specify rod size, length, type, figure number, and finish. For Metric applications specify Figure M22.

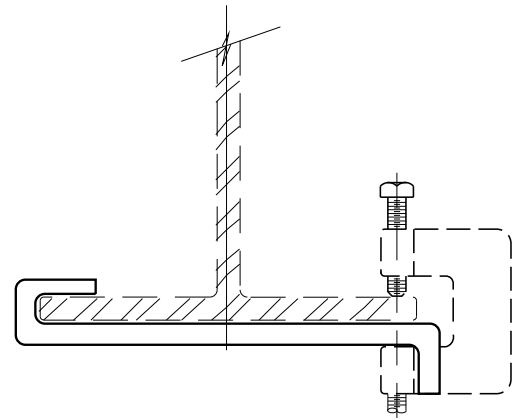
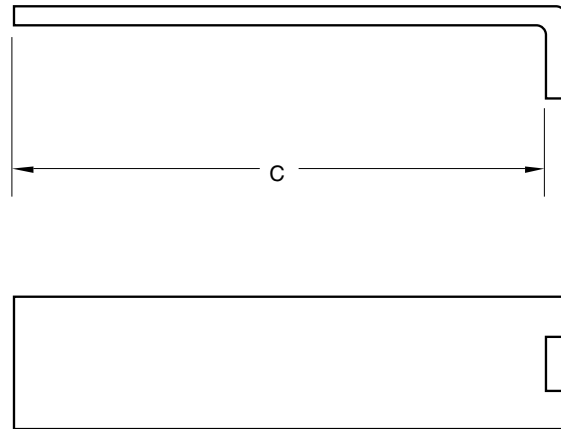


FIGURE 22 – “C” CLAMP RETAINING CLIP

CLIP SIZE	WEIGHT EACH LENGTH - DIMENSION “C”				
	4½	6	8	10	14
1	0.15	0.22	0.33	0.36	0.50
1	0.07	0.10	0.15	0.16	0.23
2	0.21	0.28	0.36	0.45	0.59
2	0.10	0.13	0.16	0.20	0.27



DIMENSIONS		TEMPERATURE	LOADS	WEIGHT
INCHES	FAHRENHEIT	POUNDS	POUNDS	
MILLIMETERS	CELSIUS	NEWTONS	KILOGRAMS	