

ADJUSTABLE SPLIT SWIVEL HANGER

Figure 240

Designed to support non-insulated, stationary lines from above. The hinged design is easier to install making it ideal for retrofit needs. Vertical adjustment is made by turning the swivel. Pipe sizes ¾" to 2" do not have the window cutout.

Material: Malleable Iron.

Compliance: MSS-SP-69 (Type 6)

Finish: Plain.

Ordering: Specify pipe size, figure number, and finish. For Metric applications specify Figure M240.

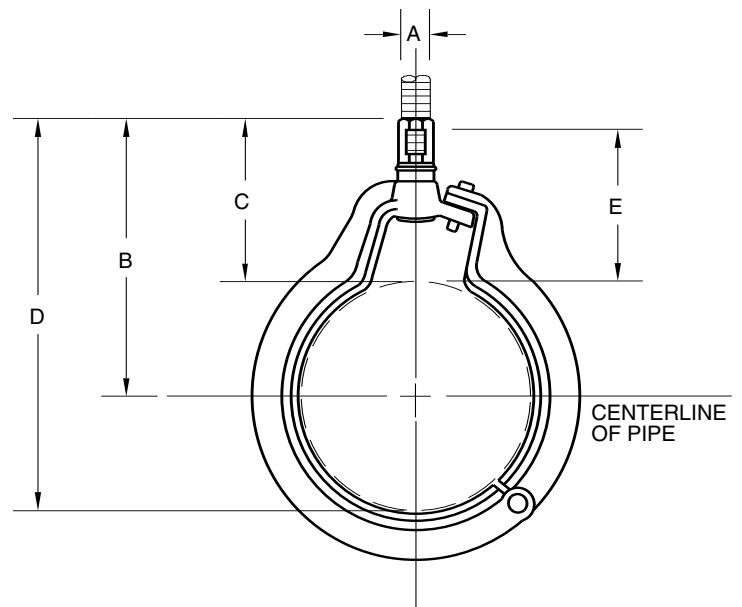


FIGURE 240 – ADJUSTABLE SWIVEL HANGER

| PIPE SIZE | MAXIMUM LOAD | ROD SIZE A | B | C | D | E | WEIGHT EACH |
|-----------|--------------|---------------|-----|-----|-----|----|-------------|
| ¾ | 300 | ¾ | 2½ | 2¾ | 2¾ | 2 | 0.23 |
| 20 | 1335 | 10 | 54 | 60 | 67 | 51 | 0.10 |
| 1 | 300 | ¾ | 2¾ | 2¼ | 3 | 1¼ | 0.25 |
| 25 | 1335 | 10 | 60 | 57 | 76 | 44 | 0.11 |
| 1½ | 300 | ¾ | 2¾ | 2¼ | 3¾ | 1¾ | 0.30 |
| 32 | 1335 | 10 | 67 | 57 | 86 | 44 | 0.14 |
| 1½ | 300 | ¾ | 2¾ | 2¼ | 3¾ | 1¾ | 0.32 |
| 40 | 1335 | 10 | 70 | 57 | 95 | 44 | 0.15 |
| 2 | 300 | ¾ | 3¾ | 2¾ | 4¼ | 1¾ | 0.34 |
| 50 | 1335 | 10 | 79 | 60 | 108 | 48 | 0.15 |
| 2½ | 500 | ½ | 4¾ | 2¾ | 5¼ | 1¾ | 0.65 |
| 65 | 2224 | 13 | 111 | 54 | 146 | 48 | 0.29 |
| 3 | 500 | ½ | 4¾ | 2¾ | 6¾ | 2 | 0.78 |
| 80 | 2224 | 13 | 117 | 54 | 162 | 51 | 0.35 |
| 3½ | 500 | ½ | 5 | 2¼ | 7 | 2¾ | 0.85 |
| 90 | 2224 | 13 | 127 | 57 | 178 | 73 | 0.39 |
| 4 | 900 | ¾ | 6 | 2¾ | 8¼ | 2¾ | 1.54 |
| 100 | 4004 | 16 | 152 | 73 | 210 | 73 | 0.70 |
| 5 | 900 | ¾ | 6¾ | 3 | 9½ | 3 | 2.00 |
| 125 | 4004 | 16 | 171 | 76 | 241 | 76 | 0.91 |
| 6 | 1300 | ¾ | 7¾ | 3¾ | 11 | 3½ | 3.20 |
| 150 | 5783 | 19 | 197 | 86 | 279 | 89 | 1.45 |
| 8 | 1800 | ¾ | 9¾ | 4¾ | 14 | 3¾ | 5.00 |
| 200 | 8007 | 22 | 248 | 111 | 356 | 98 | 2.27 |

| DIMENSIONS | | TEMPERATURE | LOADS | WEIGHT |
|-------------|------------|-------------|-----------|--------|
| INCHES | FAHRENHEIT | POUNDS | POUNDS | |
| MILLIMETERS | CELSIUS | NEWTONS | KILOGRAMS | |