

FORGED WELDLESS EYENUT

Figure 279
Figure 279L

The Figure 279 is used to connect rod ends with structural steel welded beam attachments or pipe clamps as a substitute for a welded eyerod. It provides a pivot point and adjustment. It can also be supplied tapped left hand as Fig 279L.

Material: Forged Steel.

Compliance: Federal Specification A-A-1192A Type 17, MSS-SP 69 Type 17, and BSPSS-BS3974.

Finish: Plain, Painted, Electro-Galvanized, Hot-Dip Galvanized.

Ordering: Specify figure number, rod size and finish. For Metric applications specify M279 or M279L.

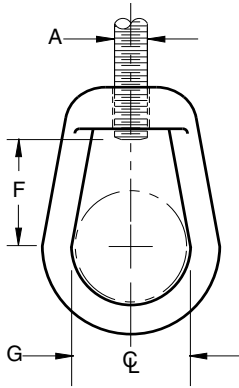


FIGURE 279 – WELDLESS EYENUT

ROD TAP A	MAX LOAD 650° F 343 °C	F	G	WEIGHT EACH
3/8	610	1	1 1/2	0.63
M10	2714	25	38	0.29
1/2	1130	1	1 1/2	0.63
M12	5027	25	38	0.29
5/8	1810	1	1 1/2	0.62
M16	8052	25	38	0.28
3/4	2710	1	1 1/2	0.60
M20	12055	25	38	0.27
7/8	3770	1 3/8	2	1.70
M20	14991	35	51	0.77
1	4960	1 3/4	2	1.70
M24	22064	44	51	0.77
1 1/4	8000	1 3/4	2 1/2	3.75
M30	35587	44	64	1.70
1 1/2	11630	1 3/4	2 1/2	3.50
M36	51735	44	64	1.59
1 3/4	15700	3 1/4	4	16.40
M42	69840	83	102	7.44
2	20700	3 1/4	4	15.90
M48	92082	83	102	7.21
2 1/4	27200	3 1/4	4	15.40
M56	120996	83	102	6.99
2 1/2	33500	3 1/4	4	14.90
M64	149021	83	102	6.76