

SIDE BEAM ANGLE BRACKET

Figure 303

The Figure 303 is designed for use in supporting pipe hangers to the side of joist, steel, or wood beams. It can be either bolted or welded to the structure.

Material: Carbon Steel.

Compliance: A-A-1192A Type 34 and MSS-SP-69 Type 34.

Finish: Plain, Painted, Electro-Galvanized, Hot-Dip Galvanized.

Ordering: Specify rod size, figure number, and finish. For Metric applications specify Figure M303.

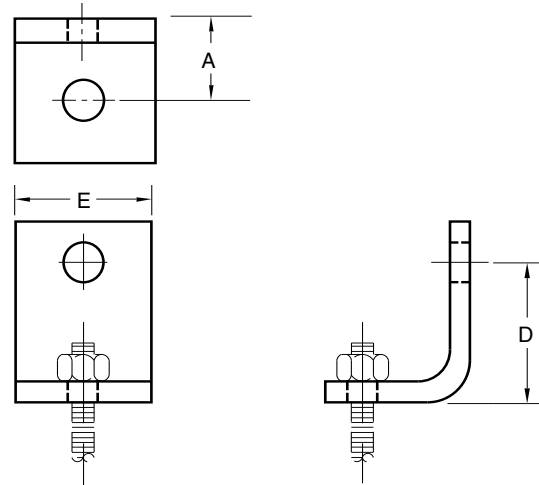


FIGURE 303 – SIDE BEAM BRACKET

ROD SIZE	MAXIMUM LOAD		A	D	E	WEIGHT EACH
	LAG SCREW	BOLT TO STEEL				
$\frac{3}{8}$	390	580	$\frac{7}{8}$	$1\frac{1}{4}$	$1\frac{1}{4}$	0.25
M10	1735	2580	22	32	32	0.11
$\frac{1}{2}$	640	960	$1\frac{3}{8}$	$1\frac{5}{8}$	$1\frac{1}{2}$	0.40
M12	2847	4270	30	41	38	0.18
$\frac{5}{8}$	760	1500	$1\frac{7}{8}$	$1\frac{7}{8}$	$1\frac{1}{2}$	0.70
M16	3381	6673	37	48	38	0.32
$\frac{3}{4}$	830	2500	$1\frac{11}{16}$	$2\frac{1}{8}$	2	1.07
M20	3692	11121	43	54	51	0.49
$\frac{7}{8}$	830	3600	2	$2\frac{1}{2}$	2	1.64
M20	3692	16014	51	64	51	0.74

DIMENSIONS		TEMPERATURE	LOADS	WEIGHT
INCHES	FAHRENHEIT	POUNDS	POUNDS	
MILLIMETERS	CELSIUS	NEWTONS	KILOGRAMS	