

HANGER ADJUSTER

Figure 38

Figure 38CT (Copper Finish)

The Figure 38 is an economical alternative to using turnbuckles for vertical piping adjustment with our Figure 34 Hinge Hanger. Figure 38CT is available in 3/8" and 1/2" rod sizes only.

Material: Malleable Iron.

Compliance: Federal Specification A-A-1192A Type 15, MSS-SP-69 Type 15.

Finish: Plain, Copper.

Ordering: Specify rod size and figure number. For Metric applications specify Figure M38 or Figure M38CT.

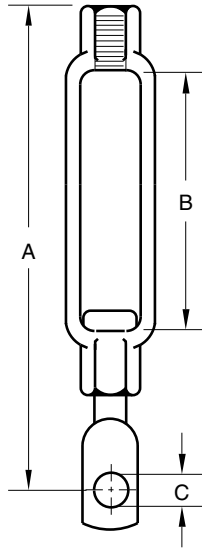


FIGURE 38 – HANGER ADJUSTER

ROD SIZE	MAX LOAD	A	B	C	WEIGHT EACH
1/4	230	2 1/2	1 1/4	7/32	0.09
M6	1023	64	32	6	0.04
3/8	610	3 13/16	1 7/8	13/32	0.28
M10	2714	97	48	10	0.13
1/2	710	3 3/16	1 13/16	1 1/2	0.31
M12	3158	97	46	10	0.14
5/8	710	4 7/8	2 3/16	1 1/2	0.72
M16	3158	124	59	13	0.33
3/4	860	4 15/16	2 5/16	1 1/4	0.70
M20	3826	125	59	14	0.32

FIG. 38CT – HANGER ADJUSTER FOR COPPER TUBING

ROD SIZE	MAX LOAD	A	B	C	WEIGHT EACH
3/8	610	3 13/16	1 7/8	13/32	0.28
M10	2714	97	48	10	0.13
1/2	710	3 13/16	1 13/16	1 13/32	0.31
M12	3158	97	46	10	0.14

DIMENSIONS		TEMPERATURE	LOADS	WEIGHT
INCHES	FAHRENHEIT	POUNDS	POUNDS	
MILLIMETERS	CELSIUS	NEWTONS	KILOGRAMS	