

HANGER ADJUSTER

Figure 38

Figure 38CT (Copper Finish)

The Figure 38 is an economical alternative to using turnbuckles for vertical piping adjustment with our Figure 34 Hinge Hanger. Figure 38CT is available in 3/8" and 1/2" rod sizes only.

Material: Malleable Iron.

Compliance: Federal Specification A-A-1192A Type 15, MSS-SP-69 Type 15.

Finish: Plain, Copper.

Ordering: Specify rod size and figure number. For Metric applications specify Figure M38 or Figure M38CT.

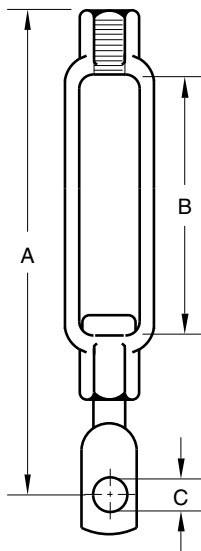


FIGURE 38 – HANGER ADJUSTER

ROD SIZE	MAX LOAD	A	B	C	WEIGHT EACH
¼	230	2½	1¼	⅞	0.09
M6	1023	64	32	6	0.04
⅝	610	3⅜	1⅝	1½	0.28
M10	2714	97	48	10	0.13
½	710	3⅜	1⅜	1½	0.31
M12	3158	97	46	10	0.14
⅝	710	4⅞	2⅝	½	0.72
M16	3158	124	59	13	0.33
¾	860	4⅜	2⅝	⅞	0.70
M20	3826	125	59	14	0.32

FIG. 38CT – HANGER ADJUSTER FOR COPPER TUBING

ROD SIZE	MAX LOAD	A	B	C	WEIGHT EACH
⅝	610	3⅜	1⅞	1½	0.28
M10	2714	97	48	10	0.13
½	710	3⅜	1⅜	1½	0.31
M12	3158	97	46	10	0.14

DIMENSIONS	TEMPERATURE	LOADS	WEIGHT
INCHES	FAHRENHEIT	POUNDS	POUNDS
MILLIMETERS	CELSIUS	NEWTONS	KILOGRAMS