

## ADJUSTABLE CHAIR AND ROLL

**Figure 40**

The Figure 40 is designed for longitudinal movement of pipe where vertical and lateral adjustment is required. Because the base plate is made of steel, it can be either welded or bolted in position. The correct height can be obtained by adjusting the screws at each corner. The correct lateral location can be achieved by sliding the chair on the ends of the adjusting screws. The Figure 40 may be used without the Base Plate to rest on customer provided flooring or structure.

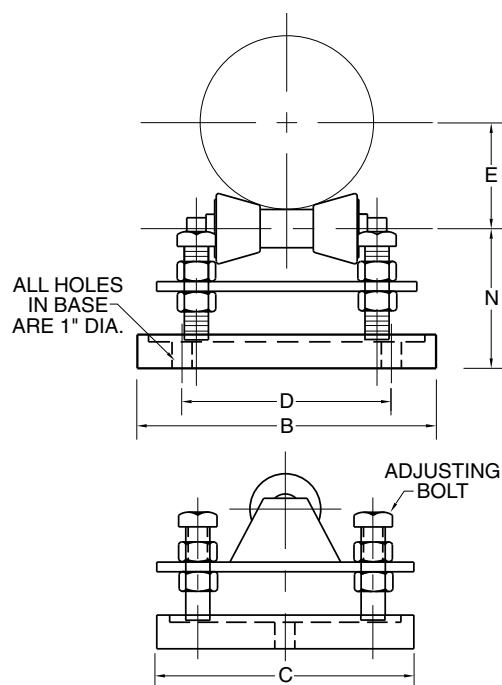
**Material:** Carbon Steel Chair, Base, Axle and Adjusting Screws with Cast Iron Pipe Roll. Use a Figure 53 when a Cast Iron Chair and Base are required. Do not exceed 450° F / 232° C at the contact point to the roll.

**Compliance:** Federal Specification A-A-1192A Type 46, MSS-SP-69 Type 46.

**Finish:** Plain, Painted, Hot-Dip Galvanized.

For pipe with insulation and a pipe covering protection saddle the Figure 40 will have to be oversized to suit. Please see the Table below showing the correct sizing for insulated pipe.

**Ordering:** Specify chair number, figure number, and finish. For Metric applications specify Figure M40.



**FIGURE 40 – ADJUSTABLE STEEL CHAIR AND ROLL**

CHAIR NO.	MAX LOAD	BARE PIPE SIZE	B	C	D	E	N		WGT. EA.
							MIN.	MAX.	
1A	390	2 2½ 3 3½	6⅞	5½	3⅞	1¾ 2⅞ 2½ 2½	3	3⅞	15.5
1A	1735	50 65 80 90	175	140	98	44 54 64 64	76	98	7.0
1	950	4 5 6	8½	5¾	5⅞	2⅞ 3 3⅞	3⅞	4½	20.7
1	4226	100 125 150	216	146	130	73 76 98	86	114	9.4
2	2100	8 10	10⅝	6½	7⅞	5⅞ 6	4⅞	6⅝	34.3
2	9342	200 250	270	165	187	137 152	124	168	15.6
3	3075	12 14	12½	7¾	9½	7⅞ 8	5⅞	7⅞	50.6
3	13679	300 350	318	197	241	181 203	149	194	23.0
4	4980	16 18 20	14⅝	8⅝	11⅞	9¼ 10½ 11¼	5⅞	7¾	73.6
4	22153	400 450 500	371	219	283	235 267 286	149	197	33.4
5	6100	24	15¾	8⅞	12¼	13⅞	6⅞	8	88.7
5	27135	600	400	219	311	340	156	203	40.2
6	7500	30	19¼	10½	15¾	16⅞	7¼	10½	166
6	33363	750	489	267	400	429	184	267	75.3
7	12000	36	22½	12	16	20	8⅞	11¾	233
7	53381	900	572	305	406	508	213	298	106
7	12000	42	22½	12	16	23⅞	8⅞	11¾	233
7	53381	1050	572	305	406	587	213	298	106

# PIPE ROLLS

## PIPE SIZE OF COVERING PROTECTION SADDLE TO BE USED WITH FIGURE 40

CHAIR NUMBER	BARE PIPE SIZE	Fig. 351 1" Cov. 25	Fig. 352 1½" Cov. 38	Fig. 353 2" Cov. 51	Fig. 354 2½" Cov. 64	Fig. 355 3" Cov. 76	Fig. 356 4" Cov. 102
1A	2 2½ 3 3½	¾ to 3 20 TO 80	¾ to 2½ 20 to 65	¾ to 1½ 20 to 40			
1	4 5 6	4 to 6 100 to 150	3 to 5 80 to 125	2 to 4 50 to 100	¾ to 1½ 20 to 40		
2	8 10	8 200	6 to 8 150 to 200	5 to 8 125 to 200	2 to 5 50 to 125	2 to 6 50 to 150	4 to 5 100 to 125
3	12 14	10 to 12 250 to 300	10 to 12 250 to 300	10 to 12 250 to 300	6 to 8 150 to 200	8 200	6 to 8 150 to 200
4	16 18 20	14 to 18 350 to 450	14 to 18 350 to 450	14 to 18 350 to 450	10 to 16 250 to 400	10 to 14 250 to 350	10 to 12 250 to 300
5	24	20	20	18 to 20	18 to 20	16 to 18	14 to 18
5	600	500	500	450 to 500	450 to 500	400 to 450	350 to 450
6	30	24	24	24	24	20 to 24	20 to 24
6	750	600	600	600	600	500 to 600	500 to 600
7	36	30	30	30	30	30	28
7	900	750	750	750	750	750	700
7	42	40	36	36	36	36	32
	1050	1000	900	900	900	900	800

DIMENSIONS	TEMPERATURE	LOADS	WEIGHT
INCHES	FAHRENHEIT	POUNDS	POUNDS
MILLIMETERS	CELSIUS	NEWTONS	KILOGRAMS