

## STRUCTURE ATTACHMENTS

### SINGLE PLATE

**Figure 85E** (Rod Tapped – Electro-Galvanized)

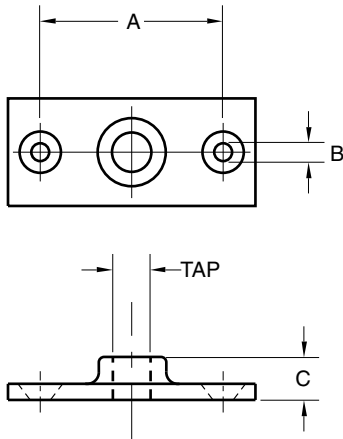
**Figure 85CT** (Rod Tapped – Copper Finish)

**Figure 85B** (Rod Tapped – Plain Finish)

The Figure 85 is designed for attaching a rod to a wooden member. This part is normally used in conjunction with our Figure 81 Split Ring.

**Material:** Malleable Iron. Figure 85SE and 85SCT are Carbon Steel.

**Ordering:** Specify rod size and figure number. For metric applications specify Figure M85E, M85CT or M85B.



**FIGURE 85E AND FIGURE 85B – SINGLE PLATE**

ROD TAP	MAX LOAD	A	B	C	WGT. EACH
$\frac{3}{8}$	180	2	$\frac{1}{4}$	$\frac{1}{2}$	0.19
M10	801	51	6	13	0.09
$\frac{1}{2}$	180	2	$\frac{1}{4}$	$\frac{1}{2}$	0.18
M12	801	51	6	13	0.08

**FIGURE 85CT – SINGLE PLATE**

ROD TAP	MAX LOAD	A	B	C	WGT. EACH
$\frac{3}{8}$	180	2	$\frac{1}{4}$	$\frac{1}{2}$	0.19
M10	801	51	6	13	0.09
$\frac{1}{2}$	180	2	$\frac{1}{4}$	$\frac{1}{2}$	0.18
M12	801	51	6	13	0.08

### SINGLE PLATE

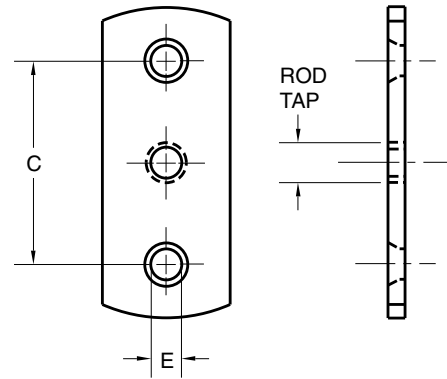
**Figure 85SE** (Rod Tapped, Steel – Electro-Galvanized)

**Figure 85SCT** (Rod Tapped, Steel – Copper Finish)

The Figure 85 is designed for attaching a rod to a wooden member. This part is normally used in conjunction with our Figure 81 Split Ring.

**Material:** Carbon Steel.

**Ordering:** Specify rod size and figure number. For metric applications specify Figure M85SE or M85SCT.



**FIGURE 85SE AND FIGURE 85SCT – SINGLE PLATE**

ROD TAP	MAX LOAD	C	E	WGT. EACH
$\frac{3}{8}$	180	$1\frac{1}{4}$	$\frac{1}{4}$	0.17
M10	801	44	6	0.08

DIMENSIONS	TEMPERATURE	LOADS	WEIGHT
INCHES	FAHRENHEIT	POUNDS	POUNDS
MILLIMETERS	CELSIUS	NEWTONS	KILOGRAMS