

STRUCTURE ATTACHMENTS

SINGLE PLATE

Figure 85E (Rod Tapped – Electro-Galvanized)

Figure 85CT (Rod Tapped – Copper Finish)

Figure 85B (Rod Tapped – Plain Finish)

The Figure 85 is designed for attaching a rod to a wooden member. This part is normally used in conjunction with our Figure 81 Split Ring.

Material: Malleable Iron. Figure 85SE and 85SCT are Carbon Steel.

Ordering: Specify rod size and figure number. For metric applications specify Figure M85E, M85CT or M85B.

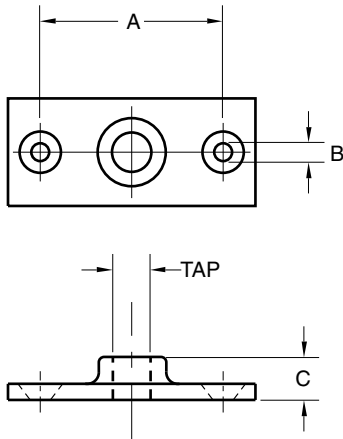


FIGURE 85E AND FIGURE 85B – SINGLE PLATE

ROD TAP	MAX LOAD	A	B	C	WGT. EACH
$\frac{3}{8}$	180	2	$\frac{1}{4}$	$\frac{1}{2}$	0.19
M10	801	51	6	13	0.09
$\frac{1}{2}$	180	2	$\frac{1}{4}$	$\frac{1}{2}$	0.18
M12	801	51	6	13	0.08

FIGURE 85CT – SINGLE PLATE

ROD TAP	MAX LOAD	A	B	C	WGT. EACH
$\frac{3}{8}$	180	2	$\frac{1}{4}$	$\frac{1}{2}$	0.19
M10	801	51	6	13	0.09
$\frac{1}{2}$	180	2	$\frac{1}{4}$	$\frac{1}{2}$	0.18
M12	801	51	6	13	0.08

SINGLE PLATE

Figure 85SE (Rod Tapped, Steel – Electro-Galvanized)

Figure 85SCT (Rod Tapped, Steel – Copper Finish)

The Figure 85 is designed for attaching a rod to a wooden member. This part is normally used in conjunction with our Figure 81 Split Ring.

Material: Carbon Steel.

Ordering: Specify rod size and figure number. For metric applications specify Figure M85SE or M85SCT.

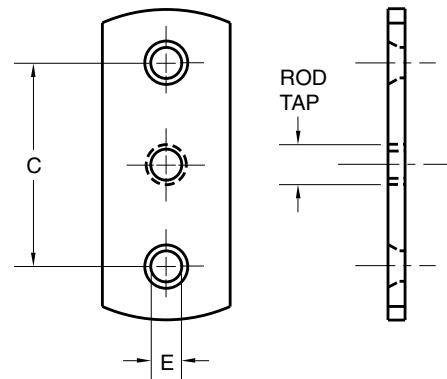


FIGURE 85SE AND FIGURE 85SCT – SINGLE PLATE

ROD TAP	MAX LOAD	C	E	WGT. EACH
$\frac{3}{8}$	180	$1\frac{1}{4}$	$\frac{1}{4}$	0.17
M10	801	44	6	0.08

DIMENSIONS	TEMPERATURE	LOADS	WEIGHT
INCHES	FAHRENHEIT	POUNDS	POUNDS
MILLIMETERS	CELSIUS	NEWTONS	KILOGRAMS