

## ANGLE KNEE

**Figure 9**

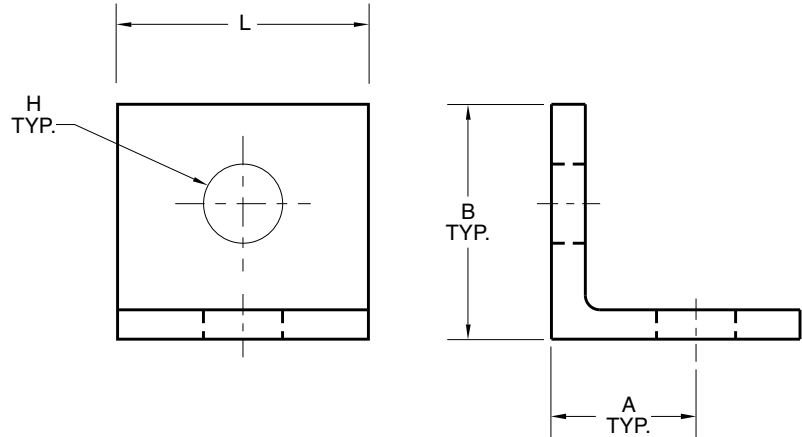
The Figure 9 is used in supporting pipe hangers to the side of joist, steel, or wood beams. It can be either bolted or welded to the structure.

**Material:** Carbon Steel.

**Finish:** Plain, Painted, Electro-Galvanized, Hot-Dip Galvanized.

**Compliance:** A-A-1192A Type 34 and MSS-SP-69 Type 34.

**Ordering:** Specify size, figure number, and finish. For Metric applications specify Figure M9.



**FIGURE 9 – ANGLE KNEE**

SIZE	ROD SIZE	MAX. LOAD	A	B	H	L	WGT. EACH
A	$\frac{3}{8}$	150	$1\frac{1}{8}$	2	$\frac{7}{16}$	2	0.53
A	M10	667	29	51	11	51	0.24
B	$\frac{1}{2}$	300	$1\frac{1}{4}$	3	$\frac{9}{16}$	3	1.23
B	M12	1335	44	76	14	76	0.56
C	$\frac{5}{8}$	760	$2\frac{1}{2}$	4	$\frac{11}{16}$	4	2.20
C	M16	3381	64	102	17	102	1.00