

RODS AND ROD ATTACHMENTS

WELDED EYEROD

Figure 93 (Right Hand Threads)

Figure 93L (Left Hand Threads)

Welded Eyerods are designed to permit swing in the attachment component due to pipe movement.

Material: Carbon Steel. Larger rod diameters over 2½", special materials, and special eye dimensions can be furnished upon request.

Finish: Plain, Painted, Electro-Galvanized, Hot-Dip Galvanized.

Ordering: Specify figure number, finish, rod size, rod length, and thread length if other than standard. For Metric applications specify M93 or M93L.

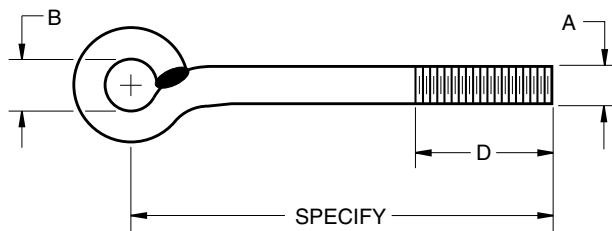


FIGURE 93, 93L – WELDED EYEROD

A	3/8	1/2	5/8	3/4	7/8	1	1¼	1½	1¾	2	2¼	2½
B	3/4	7/8	1	1¼	1½	1¾	1¾	1¾	2½	2¾	3	3¼
	19	22	25	29	32	35	41	48	64	70	76	83
THREAD LENGTH (D)	3	3	3	3	4	4	4	6	6	6	6	6
	76	76	76	76	102	102	102	152	152	152	152	152
LOAD AT 650° F/343° C	610	1130	1810	2710	3770	4960	8000	11630	15700	20700	27200	33500
LOAD AT 750° F/399° C	2713	5026	8051	12055	16770	22063	35586	51733	69837	92078	120991	149015
	540	1010	1610	2420	3360	4420	7140	10370	14000	18460	24260	29880
	2402	4493	7162	10765	14946	19661	31760	46128	62275	82114	107913	132912