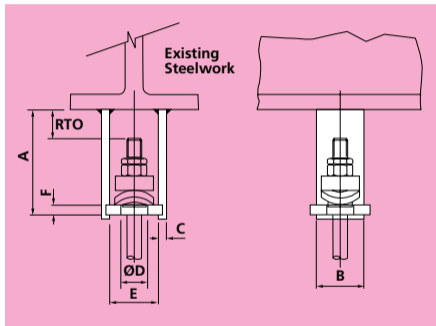


122A BEAM WELDING ATTACHMENT FOR USE WITH DUAL FACED ROCKING WASHER



Material: Carbon Steel

PART NUMBER	ROD SIZE	A	B	C	D	E	F	R.T.O.	WEIGHT lbs	LOAD CAPACITY		LOAD GROUP
										lbs	kips	
F122A_1/2	1/2	4.06	1.97	0.24	1.5	2.76	0.4	0.99	1.8	1168	1.17	2
F122A_5/8	5/8	4.22	2.96	0.4	1.5	2.76	0.4	0.99	3.5	2226	2.23	3
F122A_3/4	3/4	6.93	2.96	0.48	1.93	3.35	0.48	1.97	7	3483	3.48	4
F122A_1	1	7.21	3.94	0.48	1.93	3.35	0.6	1.97	9.7	5026	5.03	5
F122A_1 1/4	1 1/4	8.15	4.93	0.6	2.6	4.73	0.6	1.97	17.6	8046	8.05	6
F122A_1 1/2	1 1/2	8.63	5.91	0.79	2.6	4.73	0.79	1.97	28.8	11772	11.77	7
F122A_1 3/4	1 3/4	9.53	5.91	0.79	2.92	5.52	0.99	1.97	33.7	16314	16.31	8
F122A_2	2	10.2	5.91	0.79	3.23	6.3	0.99	1.97	38.3	21274	21.27	9
F122A_2 1/4	2 1/4	11.15	7.88	0.79	3.67	7.09	0.99	1.97	55.7	29431	29.43	10
F122A_2 1/2	2 1/2	12.17	7.88	0.99	4.1	8.27	1.19	1.97	78.9	39683	39.68	11