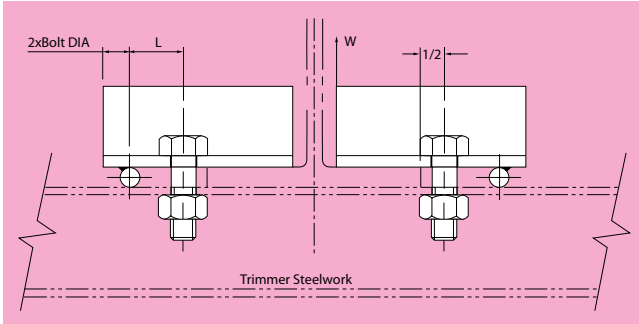


172 UNIVERSAL BEAM CLIP*



Material: Carbon Steel Order by Part Number and Beam Reference

SELECTION

1. Find the beam reference from Table A. (e.g. K2).
2. Look under the column in Table B corresponding to the beam reference letter (K in this instance) to find the max. load W for each cleat size.
3. From the magnitude and location of the applied loadings, check that the allowable cleat load (W) is not exceeded.

TABLE A

BEAM SIZE			BEAM SIZE			BEAM SIZE		
DEPTHxWIDTH	MASS/LENGTH lb/ft	BEAM REF.	DEPTHxWIDTH	MASS/LENGTH lb/ft	BEAM REF.	DEPTHxWIDTH	MASS/LENGTH lb/ft	BEAM REF.
36x16.5	260.7	A1	21x8.3	82	J1	16x6	50	R1
	230.5	A2		73	J2		45	R2
36x12	194.2	C1		68	J3		40	R3
	170	C2		62	J4	15x6	45	S1
	150.5	C3		55	J5		35	S2
	135.1	C4		66	K1	40	S3	
24x12	159.9	D1	60	K2	10x5.7	29	T1	
	120.3	D2	55	K3		25	T2	
	100.1	D3	50	K4		21	T3	
32.6x11.5	118.3	E1 E2 E3	18x7.5	45	K5	16x5.5	31	U1
				50	L1		26	U2
				45	L2	8x5.2	20	V1
				40	L3		17	V2
30x10.5	98.8	F1 F2 F3	14x6.7	36	L4	14x5	26	W1
				45	M1		22	W2
				38	M2	32	X1	
34	M3	12x5		28	X2			
30	M4			25	X3			
27x10	94.1	G1 G2 G3		12x6.5	36	N1	12x4	22
			31		N2	19		Y2
			27		N3	17		Y3
24x9	67.9	H1 H2 H3 H4	18x6	55	P1	10x4	19	Z1
				50	P2		17	Z2
			45	P3	15	Z3		

TABLE B

PART No.	ROLLED STEEL ANGLE SIZE	BOLT	LTH L	BEAM REF																
				Y&Z	W&X	V	U	P,R,S&T	N	M	L	K	J	H	G	F	E	C&D	A	
				MAXIMUM LOAD W PER CLEAT IN lbs and kip																
F172-1	2.8x2.8x0.4	5/8	1.38	1388.9	1245.6	1168.4	1146.4	1091.2	1025.1	1014.1	992	936.9	903.8	837.7	793.6	771.6	716.5	694.4	540.1	
				1.3	1.2	1.1	1.1	1.1	1	1	0.9	0.9	0.8	0.8	0.7	0.7	0.7	0.6	0.5	
F172-2	2.8x2.8x0.4	5/8	1.97	1686.5	1532.2	1455	1433	1366.8	1289.7	1278.6	1245.6	1201.5	1146.4	1080.2	1025.1	992	936.9	914.9	716.5	
				1.6	1.5	1.4	1.4	1.3	1.2	1.2	1.1	1.1	1	1	0.9	0.9	0.9	0.7		
F172-3	2.8x2.8x0.4	5/8	2.95	2028.2	1873.9	1796.7	1774.7	1719.6	1631.4	1620.3	1587.3	1532.2	1477	1399.9	1333.7	1300.7	1234.5	1212.5	981	
				2	1.8	1.7	1.7	1.7	1.6	1.6	1.5	1.5	1.4	1.3	1.3	1.2	1.2	1.2	0.9	
F172-4	2.8x2.8x0.4	5/8	3.94	2259.7	2116.4	2039.2	2017.2	1962.1	1873.9	1862.9	1829.8	1774.7	1719.6	1653.4	1576.3	1543.2	1466	1444	1190.4	
				2.2	2.1	2	2	1.9	1.8	1.8	1.8	1.7	1.7	1.6	1.5	1.5	1.4	1.4	1.1	
F172-5	3.1x3.1x0.4	3/4	4.92	3791.9	3582.5	3472.2	3439.2	3351	3218.7	3207.7	3163.6	3075.4	2987.2	2877	2766.7	2711.6	2601.4	2557.3	2138.4	
				3.7	3.5	3.4	3.4	3.3	3.2	3.2	3.1	3	2.9	2.8	2.7	2.7	2.6	2.5	2.1	
F172-6	3.1x3.1x0.4	3/4	5.91	3979.3	3791.9	3692.7	3659.6	3571.4	3450.2	3439.2	3395.1	3306.9	3229.7	3119.5	3009.3	2954.1	2843.9	2799.8	2380.9	
				3.9	3.7	3.6	3.6	3.5	3.4	3.4	3.3	3.3	3.2	3.1	3	2.9	2.8	2.8	2.3	
F172-7	3.5x3.5x0.5	3/4	6.89	5114.7	4894.2	4773	4739.9	4640.7	4497.4	4486.4	4431.2	4332	4232.8	4100.5	3979.3	3913.2	3769.9	3714.7	3196.6	
				5.1	4.9	4.7	4.7	4.6	4.4	4.4	4.4	4.3	4.2	4	3.9	3.9	3.7	3.7	3.1	

lbs
 kip