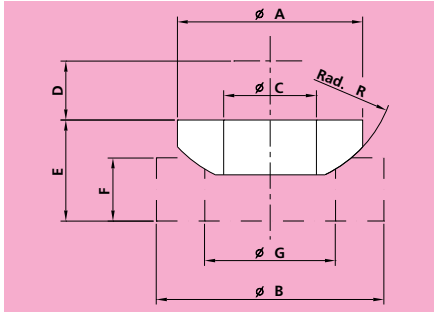
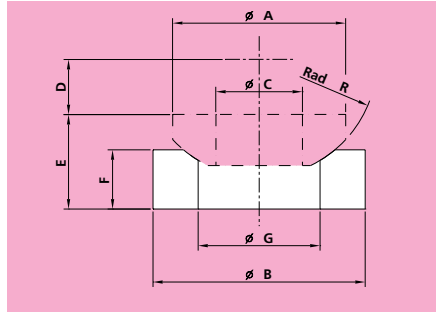


## 236 SPHERICAL WASHER



## 280 CUP FOR SPHERICAL WASHER



PART NUMBER SPHERICAL WASHER	PART NUMBER CUP	ROD DIA.	ØA	ØB	ØC	D	E	F	ØG	R	WEIGHT lbf		LOAD CAPACITY		LOAD GROUP
											SPHERICAL WASHER	CUP	lbs	kip	
F236_3/8	F280_3/8	3/8	0.91	1.26	0.46	0.28	0.55	0.39	0.59	0.59	0.02	0.11	793	0.79	1
F236_1/2	F280_1/2	1/2	1.02	1.38	0.58	0.31	0.63	0.39	0.71	0.71	0.04	0.11	1168	1.17	2
F236_5/8	F280_5/8	5/8	1.42	1.61	0.71	0.43	0.75	0.47	0.91	0.94	0.11	0.18	2226	2.23	3
F236_3/4	F280_3/4	3/4	1.73	2.13	0.83	0.55	0.94	0.59	1.14	1.18	0.2	0.42	3483	3.48	4
F236_1	F280_1	1	2.09	2.48	1.08	0.67	1.26	0.79	1.38	1.42	0.35	0.73	5026	5.03	5
F236_1 1/4	F280_1 1/4	1 1/4	2.6	2.99	1.33	0.83	1.38	0.79	1.65	1.77	0.68	1.06	8046	8.05	6
F236_1 1/2	F280_1 1/2	1 1/2	3.11	3.74	1.58	0.98	1.73	0.98	2.01	2.13	1.21	2.16	11772	11.77	7
F236_1 3/4	F280_1 3/4	1 3/4	3.62	4.13	1.83	1.14	1.93	1.18	2.32	2.48	1.96	2.91	16314	16.31	8
F236_2	F280_2	2	4.17	5.12	2.08	1.34	2.28	1.38	2.68	2.83	2.82	5.71	21274	21.27	9
F236_2 1/4	F280_2 1/4	2 1/4	4.84	5.98	2.33	1.54	2.68	1.57	3.11	3.31	4.61	8.97	29431	29.43	10
F236_2 1/2	F280_2 1/2	2 1/2	5.55	6.77	2.58	1.77	3.07	1.77	3.58	3.78	6.88	12.83	39683	39.68	11
F236_3	F280_3	3	6.22	7.64	3.08	1.97	3.46	1.97	4.02	4.25	9.94	18.25	50761	50.76	12
F236_3 1/4	F280_3 1/4	3 1/4	6.93	8.46	3.33	2.2	3.86	2.36	4.45	4.72	13.47	26.5	62005	62.01	13