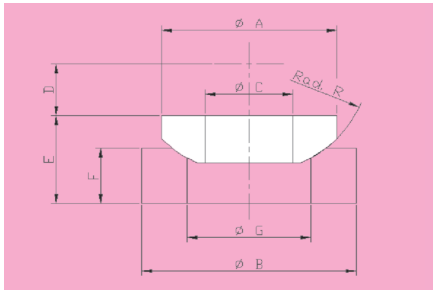
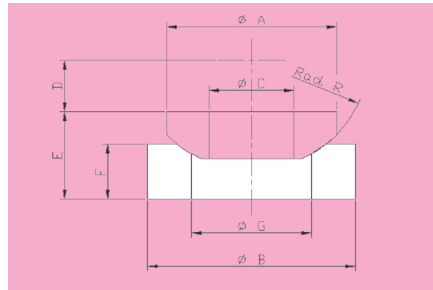


236 SPHERICAL WASHER



Material: Carbon Steel

280 CUP FOR SPHERICAL WASHER



Material: Carbon Steel

| PART NUMBER SPHERICAL WASHER | PART NUMBER CUP | ROD DIA | ØA | ØB | ØC | D | E | F | ØG | R | WEIGHT kgf | | LOAD CAPACITY | | LOAD GROUP |
|------------------------------|-----------------|---------|-----|-----|----|----|----|----|-----|-----|------------------|-------|---------------|-------|------------|
| | | | | | | | | | | | SPHERICAL WASHER | CUP | kgf | kN | |
| F236M08 | F280M08 | 8 | 19 | 29 | 10 | 5 | 13 | 8 | 13 | 13 | 0.01 | 0.03 | 230 | 2.3 | 0 |
| F236M10 | F280M10 | 10 | 23 | 32 | 12 | 7 | 14 | 10 | 15 | 15 | 0.01 | 0.05 | 360 | 3.5 | 1 |
| F236M12 | F280M12 | 12 | 26 | 35 | 14 | 8 | 16 | 10 | 18 | 18 | 0.02 | 0.05 | 530 | 5.2 | 2 |
| F236M16 | F280M16 | 16 | 36 | 41 | 18 | 11 | 19 | 12 | 23 | 24 | 0.05 | 0.08 | 1010 | 9.9 | 3 |
| F236M20 | F280M20 | 20 | 44 | 54 | 22 | 14 | 24 | 15 | 29 | 30 | 0.09 | 0.19 | 1580 | 15.5 | 4 |
| F236M24 | F280M24 | 24 | 53 | 63 | 26 | 17 | 32 | 20 | 35 | 36 | 0.16 | 0.33 | 2280 | 22.4 | 5 |
| F236M30 | F280M30 | 30 | 66 | 76 | 33 | 21 | 35 | 20 | 42 | 45 | 0.31 | 0.48 | 3650 | 35.8 | 6 |
| F236M36 | F280M36 | 36 | 79 | 95 | 39 | 25 | 44 | 25 | 51 | 54 | 0.55 | 0.98 | 5340 | 52.4 | 7 |
| F236M42 | F280M42 | 42 | 92 | 105 | 45 | 29 | 49 | 30 | 59 | 63 | 0.89 | 1.32 | 7400 | 72.6 | 8 |
| F236M48 | F280M48 | 48 | 106 | 130 | 52 | 34 | 58 | 35 | 68 | 72 | 1.28 | 2.59 | 9650 | 94.6 | 9 |
| F236M56 | F280M56 | 56 | 123 | 152 | 60 | 39 | 68 | 40 | 79 | 84 | 2.09 | 4.07 | 13350 | 130.9 | 10 |
| F236M64 | F280M64 | 64 | 141 | 172 | 68 | 45 | 78 | 45 | 91 | 96 | 3.12 | 5.82 | 18000 | 176.5 | 11 |
| F236M72 | F280M72 | 72 | 158 | 194 | 76 | 50 | 88 | 50 | 102 | 108 | 4.51 | 8.28 | 23025 | 225.8 | 12 |
| F236M80 | F280M80 | 80 | 176 | 215 | 85 | 56 | 98 | 60 | 113 | 120 | 6.11 | 12.02 | 28125 | 275.8 | 13 |