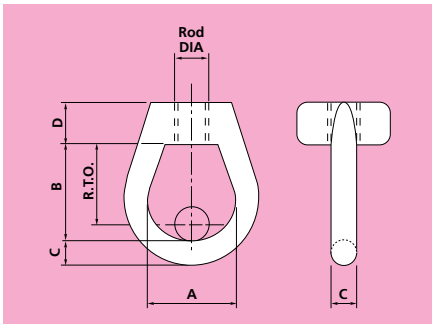


239 WELDLESS EYE NUT



Material: Forged Steel

PART NUMBER	ROD DIA X	A	B	C	D	R.T.O.	WEIGHT lbs	LOAD CAPACITY		LOAD GROUP
								lbs	kip	
F239_3/8	3/8	0.99	1.5	0.4	0.63	1.3	0.2	793	0.79	1
F239_1/2	1/2	1.5	2.01	0.52	0.67	1.78	0.5	1168	1.17	2
F239_5/8	5/8	1.5	2.01	0.52	0.67	1.7	0.5	2226	2.23	3
F239_3/4	3/4	1.97	3.12	0.67	1.11	2.72	1.8	3483	3.48	4
F239_1	1	1.97	3.12	0.67	1.11	2.64	1.7	5026	5.03	5
F239_1 1/4	1 1/4	1.86	3.75	0.79	1.86	3.15	4.6	8046	8.05	6
F239_1 1/2	1 1/2	1.86	3.75	0.79	1.86	3.04	4.4	11772	11.77	7
F239_1 3/4	1 3/4	3.98	6.26	1.5	2.25	5.44	16.5	16314	16.31	8
F239_2	2	3.98	6.26	1.5	2.25	5.32	16	21274	21.27	9
F239_2 1/4	2 1/4	3.98	6.26	1.5	2.25	5.16	15.6	29431	29.43	10
F239_2 1/2	2 1/2	3.98	6.26	1.5	2.25	5	14.9	39683	39.68	11
F239_3	3	3.98	8.75	1.93	3.51	7.33	39.6	50761	50.76	12
F239_3 1/4	3 1/4	3.98	8.75	1.93	3.51	7.17	38.3	62005	62.01	13

R.T.O. ASSUMES USE IN CONJUNCTION WITH A PIN HAVING THE SAME DIAMETER AS THE HANGER ROD