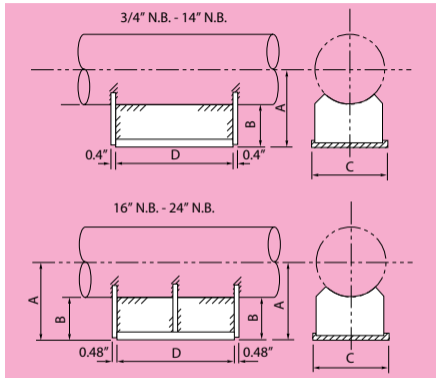


350 PIPE BASE HEAVY DUTY



Material: Carbon Steel

PART No.	PIPE N.B.	A	B	C	D	LOAD CAPACITY	
						lbs	kip
F350-20	3/4	3	2.45	3	5.91	2645	2.65
F350-25	1	3.12	2.45	3	5.91	2645	2.65
F350-32	1 1/4	3.27	2.45	3	5.91	2645	2.65
F350-40	1 1/2	3.39	2.45	3	5.91	2645	2.65
F350-50	2	3.63	2.45	3	5.91	2645	2.65
F350-65	2 1/2	3.94	2.45	3	5.91	2645	2.65
F350-80	3	4.18	2.45	3	5.91	2645	2.65
F350-100	4	5.2	2.96	3.51	5.91	2645	2.65
F350-125	5	6.7	3.94	4.02	5.91	2645	2.65
F350-150	6	7.25	3.94	4.02	5.91	2645	2.65
F350-175	7	7.76	3.94	8	7.88	4409	4.41
F350-200	8	8.27	3.94	8	7.88	4409	4.41
F350-225	9	8.75	3.94	8	7.88	4409	4.41
F350-250	10	9.34	3.94	8	7.88	4409	4.41
F350-300	12	10.32	3.94	8	7.88	8818	8.82
F350-350	14	10.95	3.94	8	7.88	8818	8.82
F350-400	16	11.97	3.94	8	11.82	19841	19.84
F350-450	18	12.96	3.94	8	11.82	26455	26.46
F350-500	20	13.94	3.94	8	11.82	26455	26.46
F350-550	22	14.97	3.94	8	11.82	26455	26.46
F350-600	24	15.95	3.94	8	11.82	30864	30.86