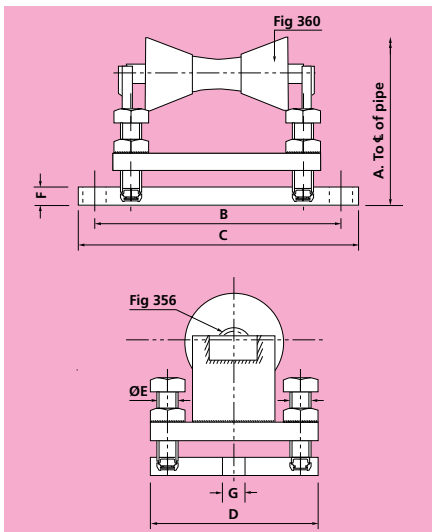


357 PIPE ROLLER AND ADJUSTABLE STAND



Material: Cast Iron and Carbon Steel

PART No.	PIPE SIZE	A MIN	A MAX	B	C	D	E	F	G	LOAD CAPACITY	
										lbs	kip
F357-50	2	4.34	5.91	5.91	7.8	4.34	5/8	0.6	0.71	385	0.39
F357-65	2 1/2	4.57	6.15	5.91	7.8	4.34	5/8	0.6	0.71	385	0.39
F357-80	3	4.97	6.54	5.91	7.8	4.34	5/8	0.6	0.71	385	0.39
F357-100	4	6.03	5.24	7.49	9.85	4.73	5/8	0.79	0.83	936	0.94
F357-125	5	6.66	8.23	7.49	9.85	4.73	5/8	0.79	0.83	936	0.94
F357-150	6	7.25	8.82	7.49	9.85	4.73	5/8	0.79	0.83	936	0.94
F357-200	8	9.02	10.6	9.85	12.21	6.11	3/4	0.79	0.83	2094	2.09
F357-250	10	10.16	11.74	9.85	12.21	6.11	3/4	0.79	0.83	2094	2.09
F357-300	12	11.86	13.43	12.6	15.44	7.68	1	0.99	1.03	2976	2.98
F357-350	14	12.49	14.06	12.6	15.44	7.68	1	0.99	1.03	2976	2.98
F357-400	16	13.9	15.48	14.38	17.21	9.34	1	0.99	1.03	4960	4.96
F357-450	18	15	16.58	14.38	17.21	9.34	1	0.99	1.03	4960	4.96
F357-500	20	16.15	17.72	14.38	17.21	9.34	1	0.99	1.03	4960	4.96
F357-600	24	18.63	20.2	15.36	18.19	9.34	1	0.99	1.03	6062	6.06
F357-750	30	23.04	24.61	18.51	21.34	11.42	1 1/4	1.19	1.03	7495	7.5
F357-900	36	27.01	28.59	21.26	24.1	12.41	1 1/2	1.58	1.03	11904	11.9
F357-1050	42	30	31.58	21.26	24.1	12.41	1 1/2	1.58	1.03	11904	11.9
F357-1200	48	33.04	34.61	21.26	24.1	12.41	1 1/2	1.58	1.03	11904	11.9